

Document No.: Registry Repair Master Help Document

Registry Repair Master

PcGasStation Corp.

<http://www.pcgasstation.com>

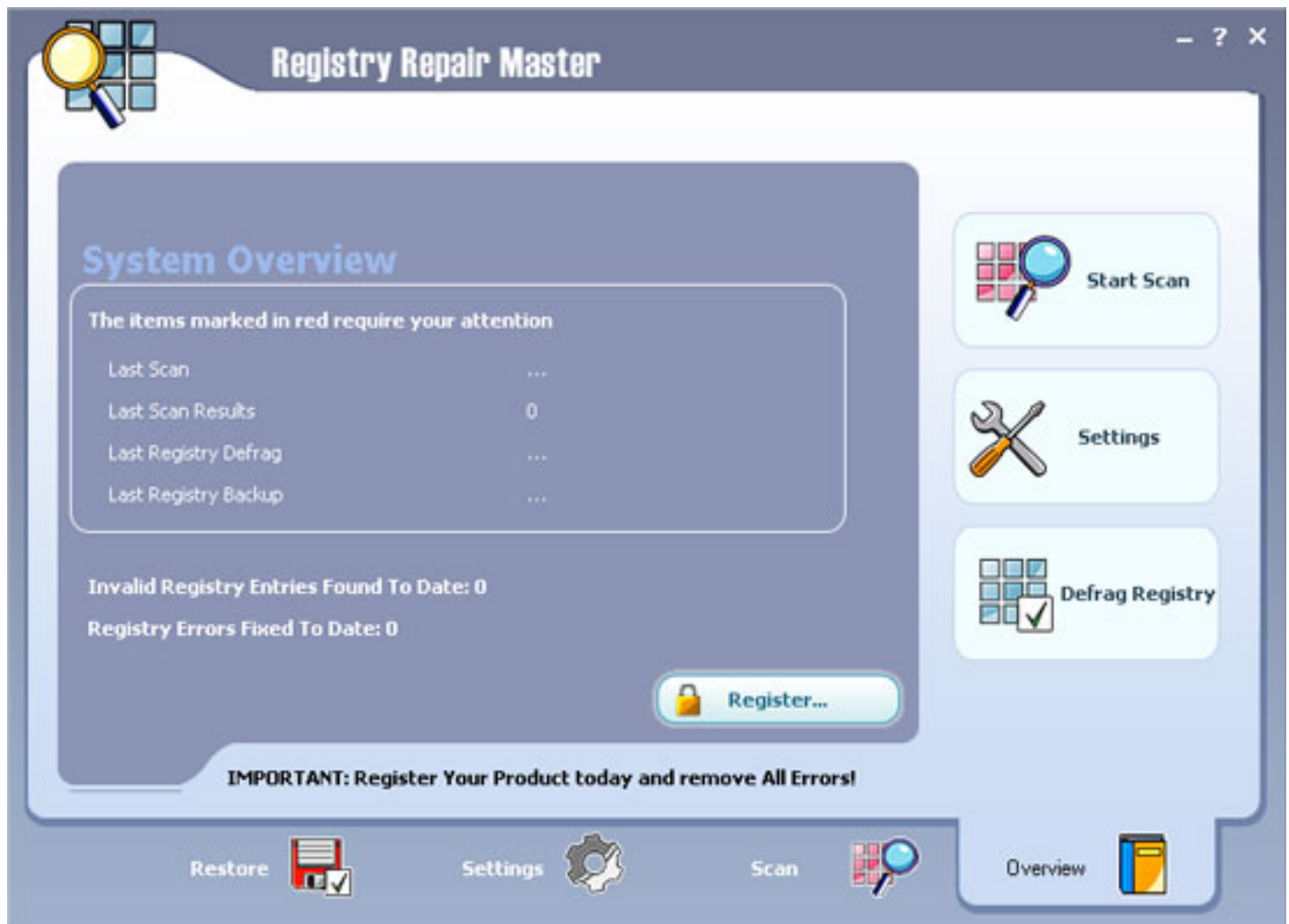
Pages Order

Getting Started	Pages 3-5
Using Registry Repair Master	Pages 6-20
Windows Registry	Pages 21-30
About PcGasStation	Pages 31
How to Buy	Pages 32-33
Glossary of Terms	Pages 34-36

Introduction

Keep your PC operating smoothly with **Registry Repair Master** which scans, identifies, cleans and repairs errors in your Windows Registry!

Using **Registry Repair Master** regularly keeps your computer clean and efficient. Registry Repair Master uses advanced technology to scan more than 10 important parts of the registry. It reduces application error messages, improves startup speeds, and increases computer performance. It can also clean and repair unwanted debris left by adware and spyware. For maximum safety, Registry Repair Master includes Backup and Undo functionality for any change. Users can select desired parts of the registry to operate on. All of these functions meet all your needs for repairing registry problems. Try it now!



Features Overview

The latest statistics show that about 94% of computers have corrupt and harmful files. Almost every PC has more than 150 errors due to registry fragmentation, corrupt, unused, missing, orphaned and obsolete entries.

Registry Repair Master has an enhanced proprietary scanning engine that scans deeper than other registry repair software solutions, checking for:

Registry integrity and shell folder entries including My Documents, profiles and favorites.

Software locations including missing, orphaned, broken or bad application/Windows paths, and links.

Unwanted browser objects.

Corrupt Active X/COM Objects.

Unused, obsolete Start Menu items.

Redundant Start-up applications and uninstalled application schedulers.

Orphaned shortcuts, temporary (.tmp) files and Scandisk or Checkdisk fragment (.chk) files.

Missing or corrupt application IDs.

Obsolete shared DLLs and folders.

Unused help file references.

Residual and unused files.

Uninstalled software remnants.

Unused and unwanted drivers.

File extensions and associations.

Unnecessary fonts and recent files list.

Advanced Error Detection Technology

With Advanced Error Detection Technology, Registry Repair Master automatically identifies all problem entries in your Windows registry to dramatically enhance performance and maximize system stability.

With Registry Repair Master, you don't need to keep track of all the sources of common problems. One mouse-click and Registry Repair Master does the rest: it fixes all your registry problems including all errors and instances of fragmentation. Registry Repair Master tunes up and streamlines your computer registry to enhance your computer experience and eliminating related system

seizures and crashes.

Improved Defrag Feature for System Performance and Stability

Defragging your registry is also critical for the smooth and stable running of your computer. Fragmentation is a serious problem and occurs as application processes modify the registry continually and incrementally. The sizes of your registry files will eventually exceed the Registry Size Limits imposed by Windows causing any subsequent modifications by the applications to fail.

Registry Repair Master allows you to regularly defrag your system to avoid seizures and crashes due to registry fragmentation.

Automatic Scans at Start-up to Keep Registry Optimized

Optimize tune-ups by setting Registry Repair Master to scan your system at every start-up thereby enhancing your computer experience and eliminating related system seizures and crashes.

Automatic Backups and Restore Functionality

With its registry backup feature, any changes and repairs that have been made may quickly be undone with the click of a button. In addition, the software allows you to select which backup registry configuration to restore. Registry Care also allows you to perform these backups automatically before each repair.

Registry Repair Master

The user interface (Overview)

The user interface (Overview)



Overview: When Registry Repair Master starts, the System Overview screen will appear.

Navigation Panel: Includes Overview, Registry Scan, Settings and Restore tabs. To navigate from one screen to another, click the desired tab.

Main Area: Contains the System Overview or a report showing summary details of:

- Last Scan Date
- Last Scan Results
- Latest Registry Defrag
- Latest Registry Backup

Quick Shortcuts panel : On the right there are shortcuts to three features of Registry Repair Master.

Start Scan: Click the Start Scan button to start scanning your Windows Registry. This is equivalent to

hitting the Registry Scan Tab and accessing the Registry Scan Screen.

Configure Settings: Click the Configure Settings button to access the Settings screen. This is equivalent to hitting the Settings Tab and accessing the Settings screen.

Defrag Registry: Click the Defrag Registry button to start defragging your Windows Registry.

Summary Bar: Displays the cumulative number of errors found to date and errors fixed to date.

Register button: Guides you to enter your Serial Number after purchase to do more!

Registry Repair Master


Scanning Your Registry

Scanning Your Registry

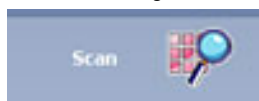
The following instructions should get you scan registry in no time!

1. Start the program. the System Overview screen is the default screen.



2. Click on  in the System Overview Screen to start scanning your Windows Registry, and this will immediately start the scanning engine of Registry Repair Master.

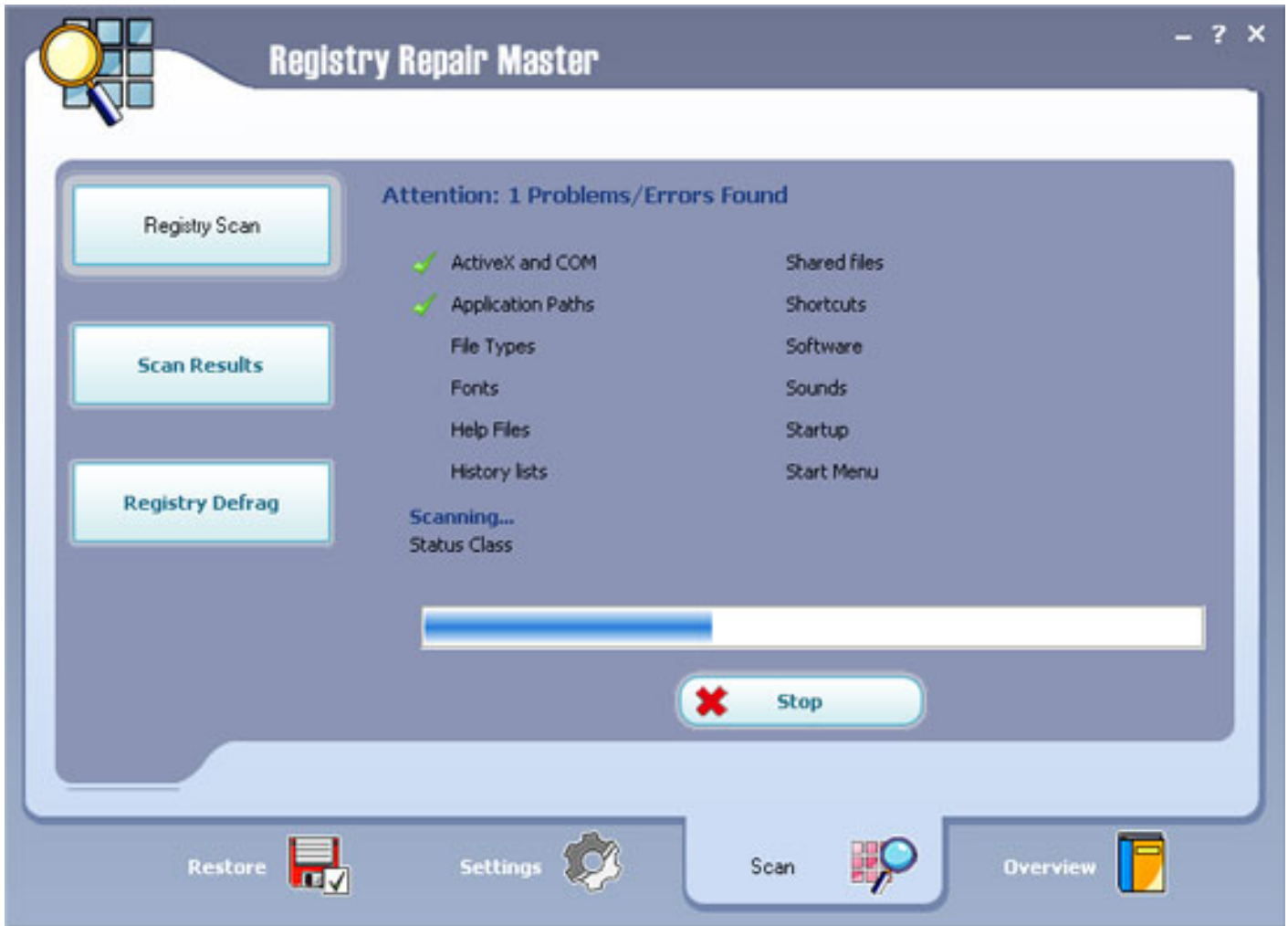
Alternatively, hit the Registry Scan Tab and accessing the Registry Scan Screen, then click on





on the Navigation Panel.

3. The Registry Scan Screen allows you to select which items within the Windows Registry to scan. To configure settings, you should tick the check boxes. By default, Registry Repair Master performs complete scans - note the checkbox next to Complete Registry Scan is ticked.

Registry Repair Master will start scanning and for a short while (depending on how big your registry is), you will see the following Progress Screen:



By clicking the Stop Scan Button, you will be able to stop the scan.

The Progress Screen will show you how many errors Registry Repair Master has found in each area of the Windows Registry. Errors are marked with  while areas that are clear of errors are marked .

4. Once you run your scan, the Scan Results window pops up automatically to reveal the incongruence found by Registry Repair Master. Immediately, Registry Repair Master summarizes prompts you of the total number of errors found as a pop-up window and within the Attention Bar.

5. Click the "OK" Button in the pop-up to reveal the list of errors and incongruence found in your Registry.



Registry Repair Master

- ? X

Registry Scan

Scan Results

Registry Defrag

Scan Results (7 Problems/Errors Found)

- Title: .resx file(*.resx)
 Found a Item in HKEY_CLASSES_ROOT*.resx point to a missing filetype that should be deleted.
- Title: GrabStub Class
- Title:
- Title: mcfunsoft.com-Nov-2007.gz
- Title: Introduction.html
- Title: DVD VCD SVCD Specification.html
- Title: cidp.m3

[Check All](#)
[UnCheck All](#)

Create Backup

Repair Registry

Restore



Settings



Scan



Overview

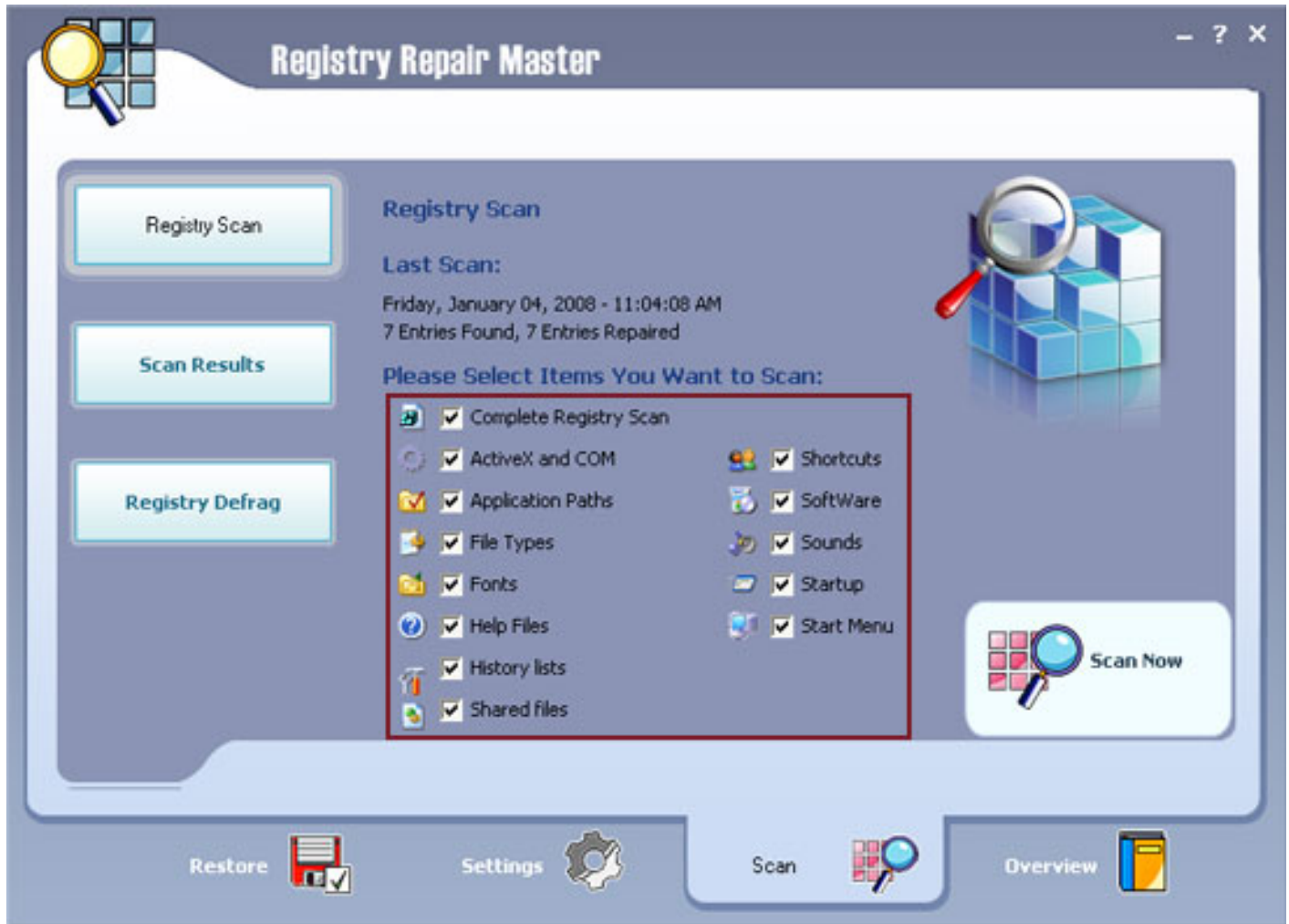


Registry Repair Master

Complete Registry Scan

Complete Registry Scan

In Registry Scan, select desired sections to scan:

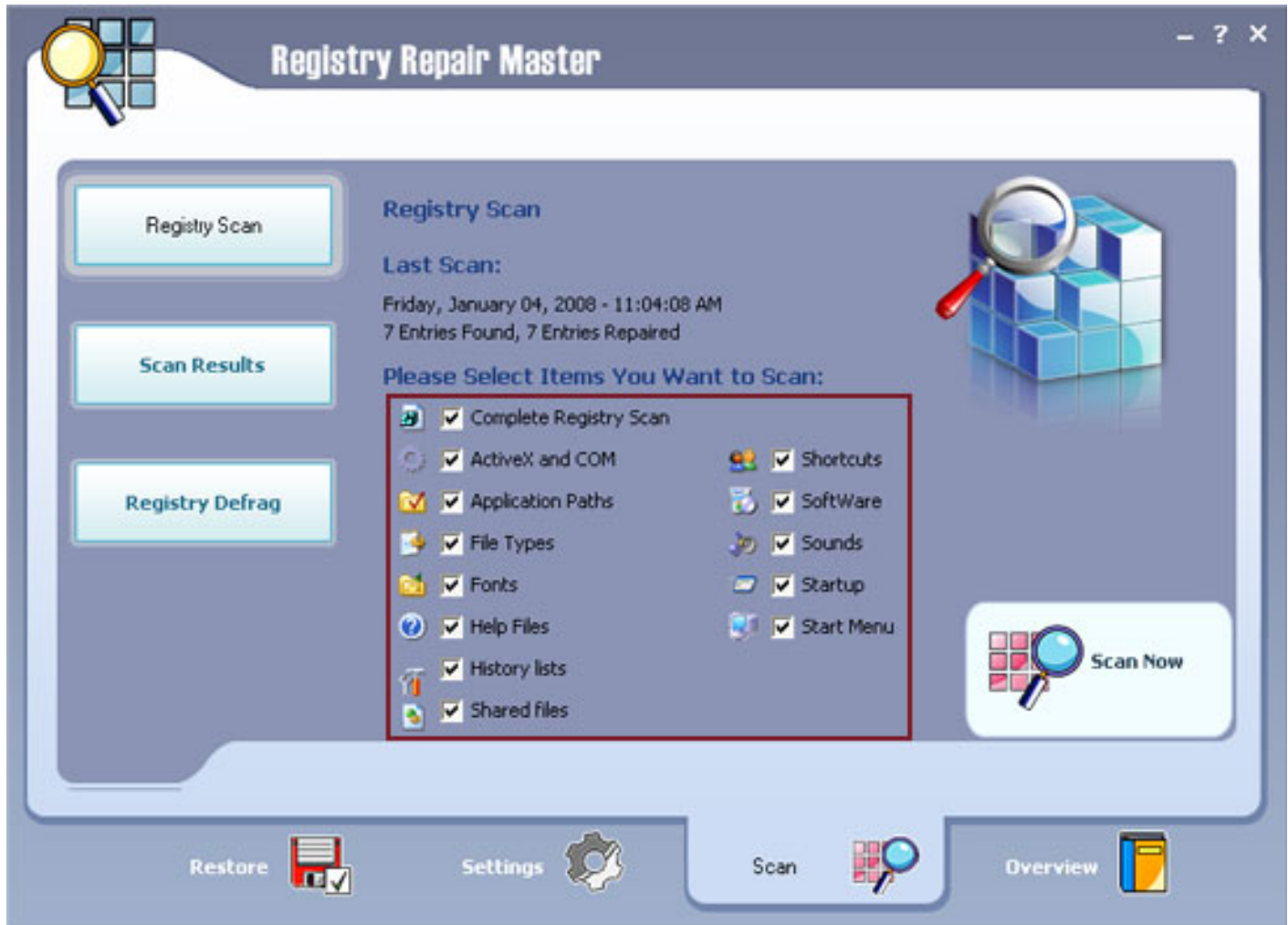


Select which sections to scan by checking the corresponding box. By default, Registry Repair Master performs complete scans.

During the Complete Registry Scan, Registry Care will scan all sections and with Advanced Error Technology is filters errors extensively and securely to ensure complete registry and optimization.

Partial Scans

Registry Repair Master can also perform scans on specific sections of your Registry one at a time.



By default, Registry Repair Master performs complete scans. If you uncheck Complete Registry Scan, notice that all the Registry sections become unchecked. To select the desired sections to scan, check the corresponding boxes.

The following explains what each section of the registry relates to:

ActiveX and COM: Registry Repair Master will search for currently installed COM and ActiveX objects. Registry Repair Master performs complete heuristic analysis of ActiveX and COM sections as they are interlinked and interdependent.

Software: Registry Repair Master will search for the software settings of the currently logged user for invalid references.

Application Paths: Many applications store the associated program executable (e.g., firefox.exe launches Mozilla Firefox) within their installation directory. Sometimes these program executables are moved

some other location but their associations are not updated - such invalid or missing references keep cluttering the registry. When ever you launch a program, Windows first search Application Path's Section and missing entries will only increase such search time - delaying program launch.

Fonts: Windows store each reference to a font in the registry. Some of the installed font faces may not appeal to all users and consequently are removed - thus failing to register changes within the Windows Registry. If the font section is not cleaned regularly, Windows can start showing different font faces instead of those expected/desired.

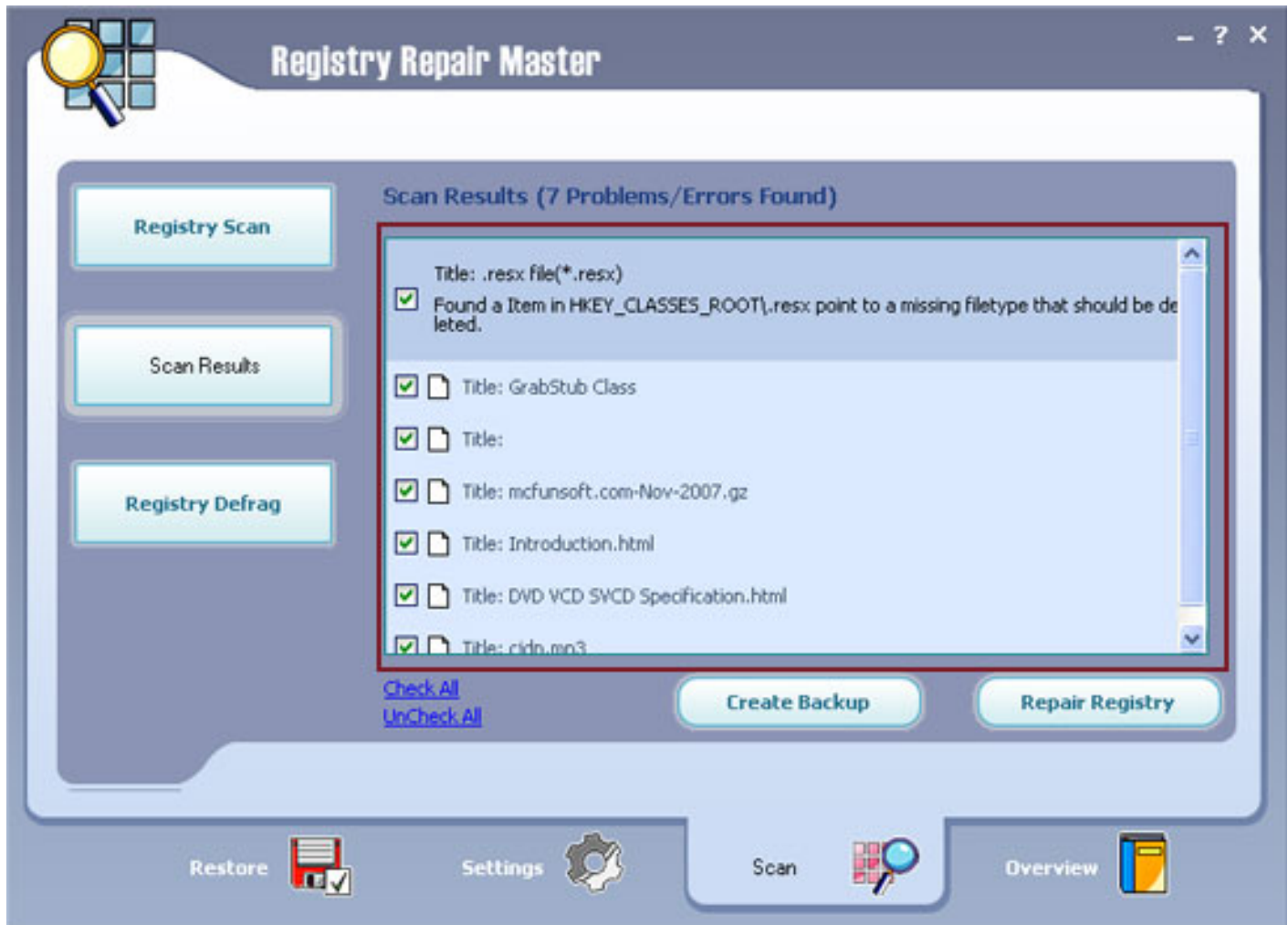
Startup: Some applications may be configured to run as soon as you start up Windows while others may automatically configure some processes to run automatically at start up without the need for user configuration (e.g., schedulers, Anti-spyware guards and Windows Update). As applications register themselves with the Windows Registry, they also indicate references to the processes and locations that the operating system needs to run upon start up. Registry Repair Master analyses the Windows Registry to repair these references.

Sound: Windows provides you facility to associate an application event with a sound event, for example, the "ding dong" sound you hear when an application presents a message Box. If a sound file used for any event is missing, applications and Windows are unable to handle the event resulting in unexpected occurrences such as playing irregular sounds. Registry Care repairs references to sounds and other events that are missing or inexistent.

Help Files: All applications following Microsoft standards must register their help files to the Windows Registry. Registry Repair Master looks for missing, erroneous or orphaned links.

Repairing Your Registry

After Registry Repair Master finishes scanning your Registry (complete or partial scans), the program brings up the Scan Results Window which summarizes all the problems found in your Windows Registry.



2. The area highlighted shows you a list of the errors found - Scroll this list and select individual entries to repair and which to leave unchanged.

By default, Registry Repair Master will repair all the identified errors. To change your selection for individual registry errors, tick the check box.

By clicking the "Uncheck All" Button, none of errors will be repaired. To reverse this selection click on the "Check All" Button.

3. Registry Repair Master also allows you to create a backup of your registry entries before repairing errors



found. To do this click on

Repair Registry

Click to repair selected errors.

4. Once Registry Repair Master starts repairing your registry, the following Screen displays the process of the repair feature. This may take several minutes and depends entirely on the number and type of errors found in your Registry.

5. Once repairs are completed, the following screen appears:



Registry Repair Master takes you back to the System Overview Screen. You will notice that your System Overview report has been updated with the date of the last scan and the number of errors found.


Configuring Registry Repair Master

Click the Settings Tab on the Navigation Panel to configure Registry Repair Master.




To change the settings simply check the box next to the particular preference.



Click  to confirm your changes.



Click  to return all your settings to the default configuration.

Settings:

Start when system boots up: launches Registry Repair Master when system boots up.

Start scan when Registry Repair Master Starts: start scanning your registry automatically as soon as Registry Care is launched.

Start minimized in System Tray: launch Registry Repair Master to run in the background.

Confirm for creating backups before Repairing System Errors: backs up your registry automatically before you repair your registry (recommended).

Registry Repair Master

Registry Restores

Registry Restores

You can restore a registry configuration to an earlier saved and backed up version.

Click the Restore Tab in the Navigation Panel to reveal a list of backup files.



The Delete button is used to delete Registry Backup File and the Restore Backup Button is used to restore a highlighted Registry Backup file.

To restore a Registry Backup file, click on the desired file within the backup file list and then click on the Restore Button.


Registry Repair Master requires a confirmation to restore the backed up registry file.

Registry Repair Master keeps maximum 5 backed up registry files to. Highlight the file you need to delete and click the Delete Button to clean out the older versions.

Registry Defrags

Registry Repair Master is designed to reorganize the data within your registry so that your computer runs more efficiently. Registry fragmentation is a similar phenomenon as fragmented hard drives. Your computer will slot new pieces of data in empty areas of your registry. If the file is too big for the slot, your computer will break it up and put a piece in one slot and another elsewhere. This creates gaps, wasted space and increase the probability of corruption of your registry. By defragging your registry, Registry Repair Master will create a more linear structure maximizing application response times and registry access times, saving memory (smaller registries consume less memory), and enhanced boot-up times. This results in improved system performance and decreases the probability of registry corruption.



Click on  to start defragging your Windows Registry in the Systems Overview Screen. Alternatively click on the Registry Scan Tab on the Navigation Panel. When in the Registry Scan Window, click on the Defrag Button on the side navigation panel to access the Defrag Window.



Once Registry Repair Master starts defragging your registry, a status monitor will appear.

After completing, Registry Repair Master will ask you to reboot your system to ensure that the affected changes take place.

To ensure the best results, please close all applications before you run your defrag.

During the defrag, your system may appear sluggish and to slow down depending on computer memory and the size of your registry. This normal - do not attempt to stop the defrag.

What is the Windows Registry

The Windows registry is a central database of information needed to configure your computer system for general settings and preferences, software applications, and hardware drivers and devices.

Keeping your registry in a good state of repair and conducting regular maintenance is imperative because the registry contains important data that is used all the time during system operation.

As you continue changing preferences, installing and uninstalling software and hardware, the registry grows and becomes more complex. In addition, the chances of errors and missing, obsolete or corrupt entries increases exponentially.

The registry is a centralized hierarchical database used by various versions of Windows (MS Windows 9x, CE, NT, 2000 and XP) to store computer configuration information. This information is necessary for Windows to run your computer system including all your installed applications and hardware devices. Not only does the registry save the path and location of these items, it also retains other details which help the processor to locate applications and hardware devices quickly and efficiently thereby reduce decreasing processing time. Records are kept of each and every item present.

Registry entries include details on:

- User profiles, settings, options and preferences

- Applications installed on the computer

- Property settings for folders and applications

- Hardware devices installed on the system

- Ports being used

- System Policies

- File Associations

When and Why do Registry Problems occur

If your system is new, you usually will not notice the need to effect any changes to your registry. However, over time, your registry will grow as you add and remove software and hardware on your computer. These additions and deletions will cause your Windows registry to become fragmented, corrupted or full of errors.

Common errors include:

- Missing, orphaned, broken or bad application/Windows paths, shortcuts and links

- Unwanted browser objects

- Unused, obsolete Start Menu items

- Missing or corrupt application IDs

- Corrupt Active X/COM Objects

- Residual and unused file and drivers

- Unnecessary recent files list

When you remove software from your system, for example, it is highly probable that residuals are still littering your hard drive and your registry. Frequent error messages, slow start-ups, sluggishness, declining performance, system stalls, severe degradation in operating speed, unstable and frequent application errors and crashes, and, at times, even an inability to start Windows.

More often than not, these problems happen because:

- You install or uninstall applications including trial downloads

- Some programs are never really completely uninstalled leaving hard-to-find traces in your Windows registry

- You have embedded spyware, adware or other components (such as DLLs or programs that revive themselves on every start up

- You have unused but undeleted drivers within your system

It is critical to have a healthy and clean Registry for optimum system performance and system stability. Registry entries should not be left to stagnate in your system where they may eventually cause problems

Keeping track of all this information is grueling and bewildering

How is the Windows Registry Structured

The registry database is stored in a hierarchical structure. It may be best to conceive the registry as a tree divided into a number of areas or branches. Depending on your Windows version, the Registry comprises four to six sub-trees of keys called hives (also referred to as discrete files).

Each hive contains a Registry sub-tree, which has a key that serves as the root (i.e., starting point) of the tree. A registry hive is a group of keys, sub keys, and values in the registry that has a set of supporting files containing backups of its data. Sub keys and their values reside beneath the root. The values contain the actual information stored in the Registry.

The majority of the information in the Registry is placed there automatically by Windows when the operating system is installed.

How do I know whether I have Registry problems

Changes are not necessary when you have a new system even though within a very short period, your registry will quickly grow as you install and remove software and hardware. Usually, within six months, your Windows Registry will become highly fragmented with regular use; and, if you add and remove software and hardware frequently or often effect changes within your system, your registry may corrupt and be full of errors.

Changes to registry entries modify the size of the files where the information is stored.

Registry fragmentation occurs because certain processes continually use the registry to incrementally modify the same values in the corresponding registry hives. Microsoft warns, for example, that this fragmentation, in certain cases, may be excessive. File sizes may eventually exceed the Registry Size Limits imposed by Windows and this will cause subsequent modifications to the registry to fail with resultant errors, slowdowns and crashes.

Some registry errors include:

- Missing, orphaned, broken or bad application/Windows paths, shortcuts and links

- Unused, obsolete Start Menu items

- Missing or corrupt application IDs

- Residual and unused files

- Unused and unwanted drivers

- ...the list is endless

None of these problems are visible unless you access the registry directly. And even there the problems are rarely obvious. Registry fragmentation and errors will effect the performance of your computer and its stability and smooth operation.

The more frequent symptoms of registry problems include:

- Frequent error messages

- Slow start-ups

- Sluggishness

- Declining performance

- System stalls

- Severe degradation in operating speed

- Unstable and frequent application errors and crashes

At times, even an inability to start Windows

What are the most common Registry problems

Several problems may occur within your registry and are generally related to registry fragmentation, and corrupt, unused, missing, orphaned or obsolete entries.

Fragmentation may be a serious problem and usually occurs because certain processes continually and incrementally modify the same values within the registry. This fragmentation, in certain cases, be excessive and eventually registry file sizes may exceed the Registry Size Limits imposed by Windows. This will cause any subsequent modifications to the registry to fail.

Some registry errors include:

- Registry integrity and shell folder entries including My Documents, profiles and favorites
- Software locations including missing, orphaned, broken or bad application/Windows paths, and links
- Unwanted browser objects
- Corrupt Active X/COM Objects
- Unused, obsolete Start Menu items
- Redundant Startup applications and uninstalled application schedulers
- Orphaned shortcuts, temporary (.tmp) files and Scandisk or Checkdisk fragment (.chk) files
- Missing or corrupt application IDs
- Obsolete shared DLLs and folders
- Unused help file references
- Residual and unused files
- Uninstalled software remnants
- Unused and unwanted drivers
- File extensions and associations
- Unnecessary fonts and recent files list

Is my PC free of Registry problems

Statistics show that about 94% of computers have corrupt and possibly harmful files. On average, almost each PC will have about 150+ errors on them due to corrupt or missing registry entries.

Although a closer analysis is needed (download Registry Repair Master for a free scan), it is highly probable that even though your computer system is new or you are not encountering any visible serious problems, your computer already has some problems in the registry.

The more frequent symptoms of registry problems include:

- Frequent error messages
- Slow start-ups
- Sluggishness
- Declining performance
- System stalls
- Severe degradation in operating speed
- Unstable and frequent application errors and crashes
- At times, even an inability to start Windows

If you are experiencing system crashes or if some of your installed applications are freezing or seizing for no obvious reason, your best bet is to de-fragment, clean and repair your Registry.

Keeping your system free of registry problems and fragmented entries is difficult even for the most experienced of users. The task is daunting and rather confusing simply because there are so many registry entries and detailed knowledge is required to effect any changes and not cause damage.

This is why Registry Repair Master has become one of the leading registry repair software utilities on the market. Literally, hundreds of users entrust the defragging, cleaning and repairing to the Registry Repair Master, which, when used regularly, ensures that you prevent registry glitches and errors thereby dramatically improving system performance and stability.

Registry Repair Master is the safest and most trusted solution to clean and optimize your system, free it from errors and residual files and drivers. Through Advanced Error Detection Technology, Registry Repair Master automatically identifies missing, corrupt, or invalid entries in your Windows registry and dramatically enhance performance and stability.

With Registry Repair Master, you don't need to keep track of all the sources of common problems. One mouse-click and Registry Repair Master does the rest. And, using Registry Care regularly keeps your PC free from errors and from unused or unwanted files.

Registry Repair Master

Repair Registry problems

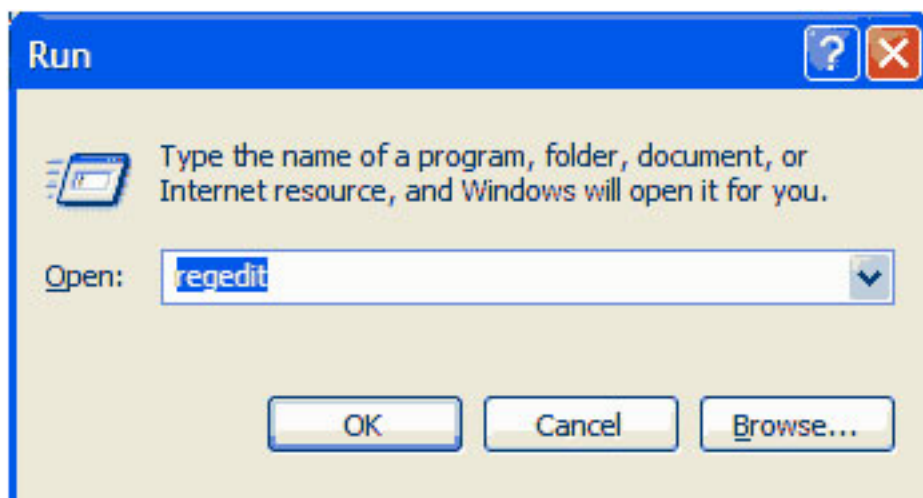
Do I need to repair Registry problems

Without any shadow of doubt! If you don't, error messages will increase, your system start-up time will increase, your computer will be more sluggish than ever, system performance will take a nose-dive, you will start experiencing more frequent application seizures and crashes and eventually Windows may not start.

Prevention is always better than cure. Repairing registry issues and preventing crashes should be a your top priority - however, this means that you are reacting to problems as they arise. Instead, you should use registry repair software (such as Registry Repair Master) regularly (at least once a month) to clean your system and keep it operating at peak performance and stability. Defragging your registry is also crucial. Fragmentation may be a serious problem and usually occurs because certain processes continually and incrementally modify the same values within the registry. This fragmentation, in certain cases, be excessive and eventually registry file sizes may exceed the Registry Size Limits imposed by Windows. This will cause any subsequent modifications to the registry to fail.

How do I repair Registry problems

Registry problems may be repaired either manually by accessing the regedit utility built in Windows or automatically through registry repair software. The regedit utility is accessed through the Start Menu->Run and then typing regedit before clicking OK.



Keeping your system free of registry problems and fragmented entries is difficult even for the most experienced of users. The task is daunting and rather confusing simply because there are so many registry entries and detailed knowledge is required to effect any changes and not cause damage. Incorrectly editing the registry may severely damage your system. Before making changes to the registry, you should back up any valued data on your computer.

The top registry repair software solutions like Registry Repair Master help you do all this work automatically at the click of a button.

Simply click on the Start Scan button to scan your registry and identify problems. Once these problems are listed you can repair your registry with the click of the Repaired Registry button. To defrag your registry, just click on the relevant button.

What is Registry Repair Software

Registry repair software fixes all your registry problems including all errors and instances of fragmentation

It tunes up and streamlines your computer registry to enhance your computer experience and eliminating related system seizures and crashes. Registry repair software keeps track of all registry entries repairing issues and ensuring your computer to work at peak performance. Using the software regularly allows you to minimize registry related problems.

Fragmentation is a serious problem and occurs when application processes modify the registry continually and incrementally . Eventually registry file sizes may exceed the Registry Size Limits imposed by Windows. This causes subsequent modifications to the registry to fail. Most registry repair software allow you to defrag your registry ensuring that such issues do not occur. This is true prevention.

About PC Gas Station

Create the World Class Applications!

Being a shareware developer of Windows Operating System solutions, PC Gas Station take the lead in this domain. We have professional experience in execution of our philosophy - Think as A Customer. This gives us the idea to create reliable and simple-in-use software products for you.

With sleek, clear interfaces PC Gas Station R&D Center creates simple solutions to complicated problems.

Contact Us

For Customers

Email:

English: support@pcgasstation.com

French: support_fr@pcgasstation.com

German: support_de@pcgasstation.com

Registry Repair Master

Product ID: 300152414



We always do our best to answer your question!

For Partners

North America:

sales@pcgasstation.com

We benefit together with our partners in a win-win model - the PC Gas Station Business Model, and we love to talk about creating with you.

PC Gas Station

<http://www.pcgasstation.com>

How to buy Registry Repair Master

As soon as you make your order, our resellers will verify it. Your order will most likely be processed within less than 1 hour, but in some VERY rare cases it may take resellers more than 24 hours to process your payment.

The registration key will be automatically generated at our server and e-mailed to you immediately after we receive payment confirmation from our e-commerce reseller.

Please do not worry if you haven't received the registration information right away. Delays usually occur due to the high security settings of spam filters used by our clients. Our message may be rejected as a spam message by the mail service you use.

If you haven't got the registration message in several hours, feel free to contact our [Support Team](#) via email.

If you have questions concerning our software, send e-mail to: support@pcgasstation.com. **We always do our best to help you!**



Buy Now

Why Registry Repair Master?

Save Time

- It is outstanding in **high-speed**;
- The **easy-to-use interface** helps you catch on to the system quickly.
- According to surveys, it saves **20%** time in scanning.

Save Money

- It is your **one-way ticket** to fixing all your registry problems.
- 30-day money-back guarantee** if you are not satisfied with it!

All in one tool

Scanning, repairing and backup registry are all supported by this powerful tool.

Easy-to-use

With step-by-step manual, Whether you are an experienced user or a beginner, the software will make the task of optimizing your system a breeze!

What will you have after purchase?

Full version of Registry Repair Master

Fun in unlimited system optimizing.

Free update(Major Update Not Included)

Customer care

We are pleased to offer our care to meet your needs. We promise that any customer questions will be replied within 1 business day!

Coupons for PC Gas Station products in Discount Center

Great discount for customers.

Is my order secure?

As we did for years, we promise the most secure purchase.

[ShareIt](#) and [RegNow](#), all these PC Gas Station partners passed strict certification. We truly believe in 'Only by benefiting our customer can we benefit ourselves'. So your purchase security in Windows Supporter is one of our top priority! PC Gas Station has been involved in E-commerce for years. And through these years, we built up a secure online shopping system. You can enjoy the speed and convenience we offer.

Glossary of Terms

ActiveX

An ActiveX control is essentially a simple OLE object that supports a variety of interfaces. ActiveX Controls have become the primary architecture for developing programmable software components for use in a variety of different containers, ranging from software development tools to end-user productivity tools. ActiveX controls register themselves in the Windows Registry.

Application

Applications are programs that are designed for end users such as word processors, spreadsheets, Customer Relationship Management and database software.

Backup

The procedure that allows you to store your data on a separate storage medium so that you can reproduce the data with 100% accuracy if and when data loss takes place.

COM

Microsoft defines COM or Component Object Model as "a platform-independent, distributed, object-oriented system for creating binary software components that can interact. COM is the foundation technology for Microsoft's OLE (compound documents), ActiveX® (Internet-enabled components), as well as others".

Custom Controls

A custom control is subsequently a control that is non-standard to Windows or proprietary to the application that is being installed. An example, in a car racing game, a custom control would be the speedometer. It is not a native Windows control but is required by the application (car racing game).

File Associations

A file association allows you to control certain aspects of how the Shell's treats different file types.

File Extensions

In such operating systems as Windows, one or several letters (generally three) at the end of a filename. Filename extensions usually follow a period (dot) and indicate the type of information stored in the file. Common file extensions include pdf, .exe, .gif, .jpg, .tif, .mp3, .avi, .doc, .xls, and .zip.

File System

A system for organizing directories and files, generally in terms of how it is implemented in the disk operating system.

Objects

An object is a software bundle of variable items of data (state) and related behaviors implemented through methods. A method is function (subroutine) associated with an object. For example, an event is a common object used in window systems to represent the action of a user pressing a mouse button or a key on the keyboard.

Processes

While the term "program" refers to an executable code (the exe file for MS Word, for example), a process is a program that is being executed. When you start a program in Windows, the executable will be loaded into RAM. Windows will then add the new process to its internal process list and make sure the process receives some CPU time as well as memory and other resources.

Registry

The Windows registry is a central database of information needed to configure your computer system for general settings and preferences, software applications, and hardware drivers and devices. Keeping your registry in a good state of repair and conducting regular maintenance is imperative because the registry contains important data that is used all the time during system operation.

Registry Fragmentation

Registry fragmentation is a phenomenon similar to fragmented hard drives. Your computer will slot new pieces of data in empty areas of your registry. If the file is too big for the slot, your computer will break it up and put a piece in one slot and another elsewhere. This creates gaps, wasted space and increase the probability of corruption of your registry.

Registry Repair Software

Registry repair software fixes all your registry problems including all errors and instances of fragmentation.

Restore

The process of reinstating a set of data to its original state before the data loss or related incident has occurred.

Shell

The Windows user interface gives you access to a wide variety of objects necessary for running applications and managing the operating system. The most numerous and familiar of these objects are the folders and files that reside your hard drive. There are also a number of virtual objects that allow the user to do tasks, such as send files to remote printers or access the Recycle Bin. The Shell organizes these objects into a hierarchical structure and provides users and applications with a consistent and efficient way to access and manage various objects. Users interact with the hierarchy (or namespace) through the Shell's graphical UI or through an application.

Shell Namespace

The Shell namespace organizes the file system and all objects managed by the Shell into a single tree-structured hierarchy. Think of it as a larger and more inclusive version of the file system.

Shortcuts

Special types of files that contain preset links to various single files, folders and devices. Windows has a series of shortcuts placed on the computer desktop to allow access to files and devices at one click of a button.

User Interface

The menu and general instruments available for the user to communicate with the program. In Registry Repair Master the user interface is designed to be highly intuitive and exceptionally simple to use.

Virtual Devices

Virtual devices are also referred to as a virtual peripheral - a virtual device mimics a physical hardware device, essentially, "tricking" your system into believing that a device exists when actually it does not. For example, fax software can act as a virtual printer. When want to send a document to your fax modem, you would print it "normally" to the fax/modem (virtual printer) device, which then sends information to another fax / modem or fax machine instead of your printer actually printing the file.