

Document No.: Power Process Controller Help Document

# Power Process Controller

PCGasStation Corp.

<http://www.pcgasstation.com>

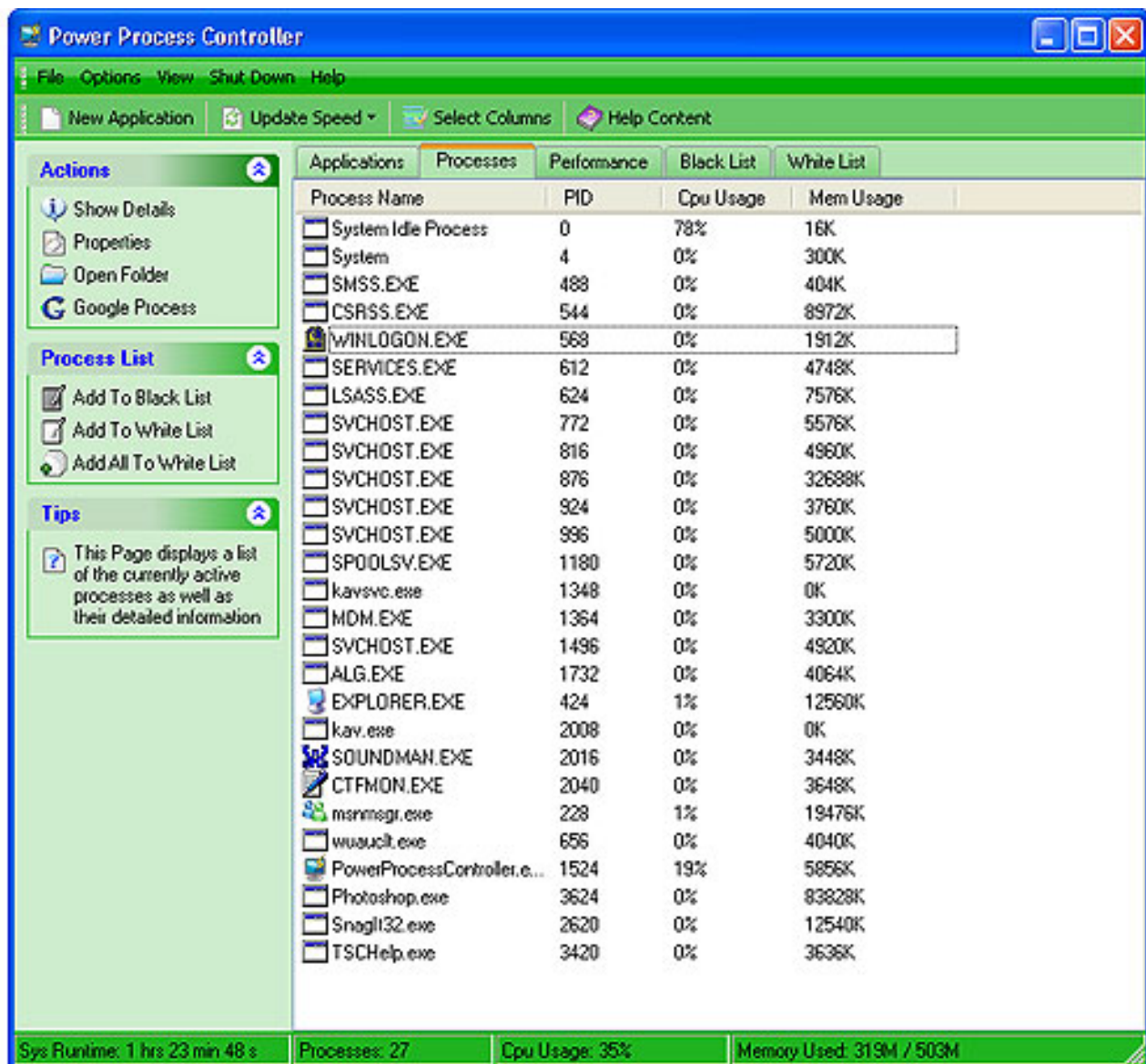
### Pages Order

<b>Getting Started</b> .....	Pages 3-6
<b>Using Power Process Controller</b> .....	Pages 7-25
<b>About PCGasStation</b> .....	Pages 26
<b>How to Buy</b> .....	Pages 27-28
<b>FAQs</b> .....	Pages 29-30

### Introduction

**Power Process controller** is an essential tool for dealing with threatening programs. It lists all the processes active on your computer, displays information on the process details and allows you to kill programs manually if necessary. Several other tools offer you detailed information about Internet connections, DLL files, CPU and memory use, Internet server programs running on your computer.

You will get information and also change them. It meets all your needs for monitoring processes. Try it now!



### Features Overview

#### **What the Power Process Controller is and what you can do with it:**

See what's happening behind the desktop.

See the modules of each running process, **Power Process Controller** allows you to close normally or terminate any running process.

See graphs and data on CPU and memory usage.

Complete information about processes and modules.

Show the general information.

Specify process counter column headings.

Black List which confirms that items being analyzed are not acceptable.

White List which confirms that the item being analyzed is acceptable.

Search for process information through Google.

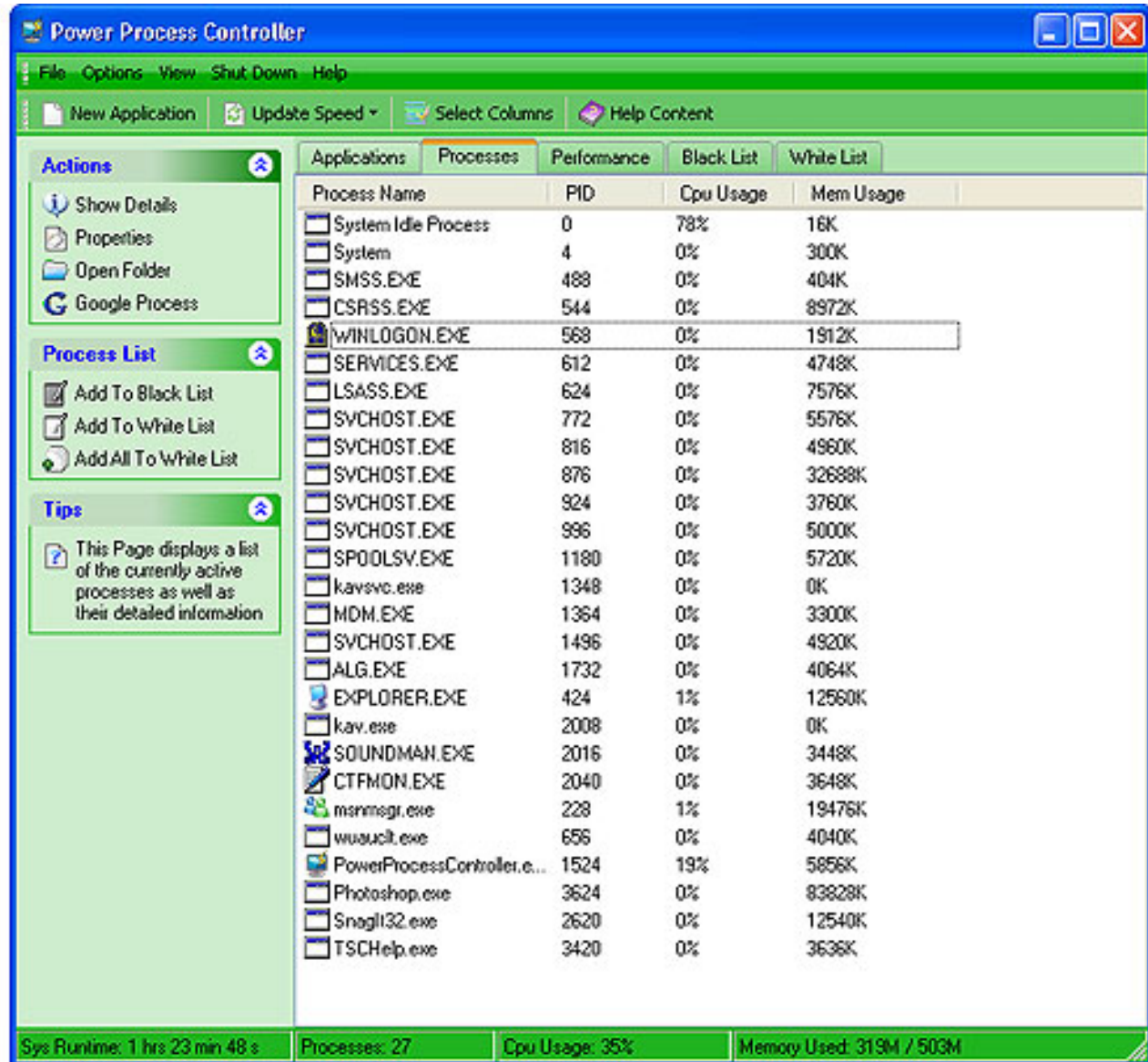
Pause process suspends the execution of process until it is reactivated by the resume process command.

So, with one quick look you can see that **Power Process Controller** is the tool you've been looking for to show you the inner workings of your computer, manually control program processes and more.

# Power Process Controller

The user interface (Overview)

## The user interface (Overview)



**Overview:** When Power Process Controller is started, all currently running processes are displayed under the Processes tab.

**Toolbar:** Adding new applications, regulating update speed, select columns for processes and help content are all included to help users run these relevant commands conveniently.


**Task Panel:** Allows user to approve or deny some of the commonly used tasks.

**Tab Page:** Applications, Processes, Performance, Black List, and White List allow user to

navigate from one page to another

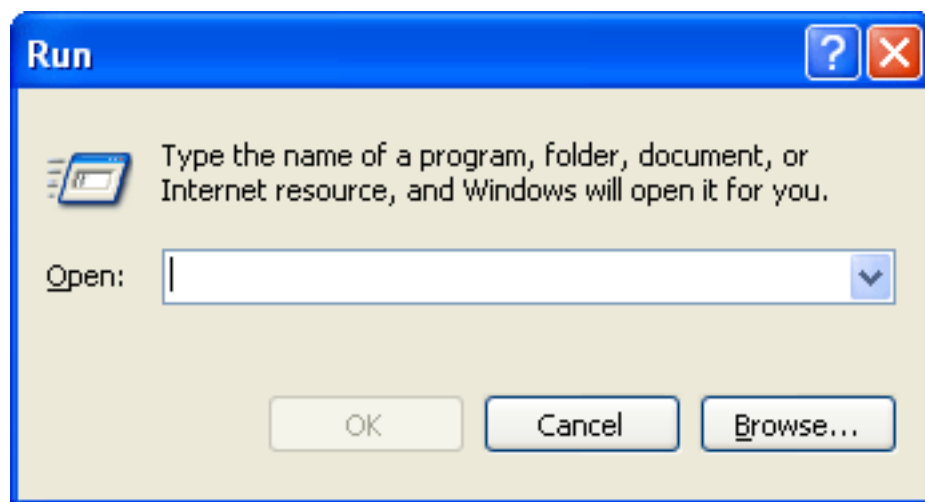


### How to Add a new application

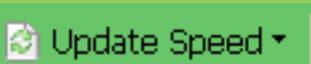
Add a new application by clicking 

The following steps describe how to add a new application:

- ▶ **Step1:** Click the "New Application" button to open the Windows Run dialog.
- ▶ **Step2:** Type the name of a program, folder, document or internet resource, and windows will open it for you. in



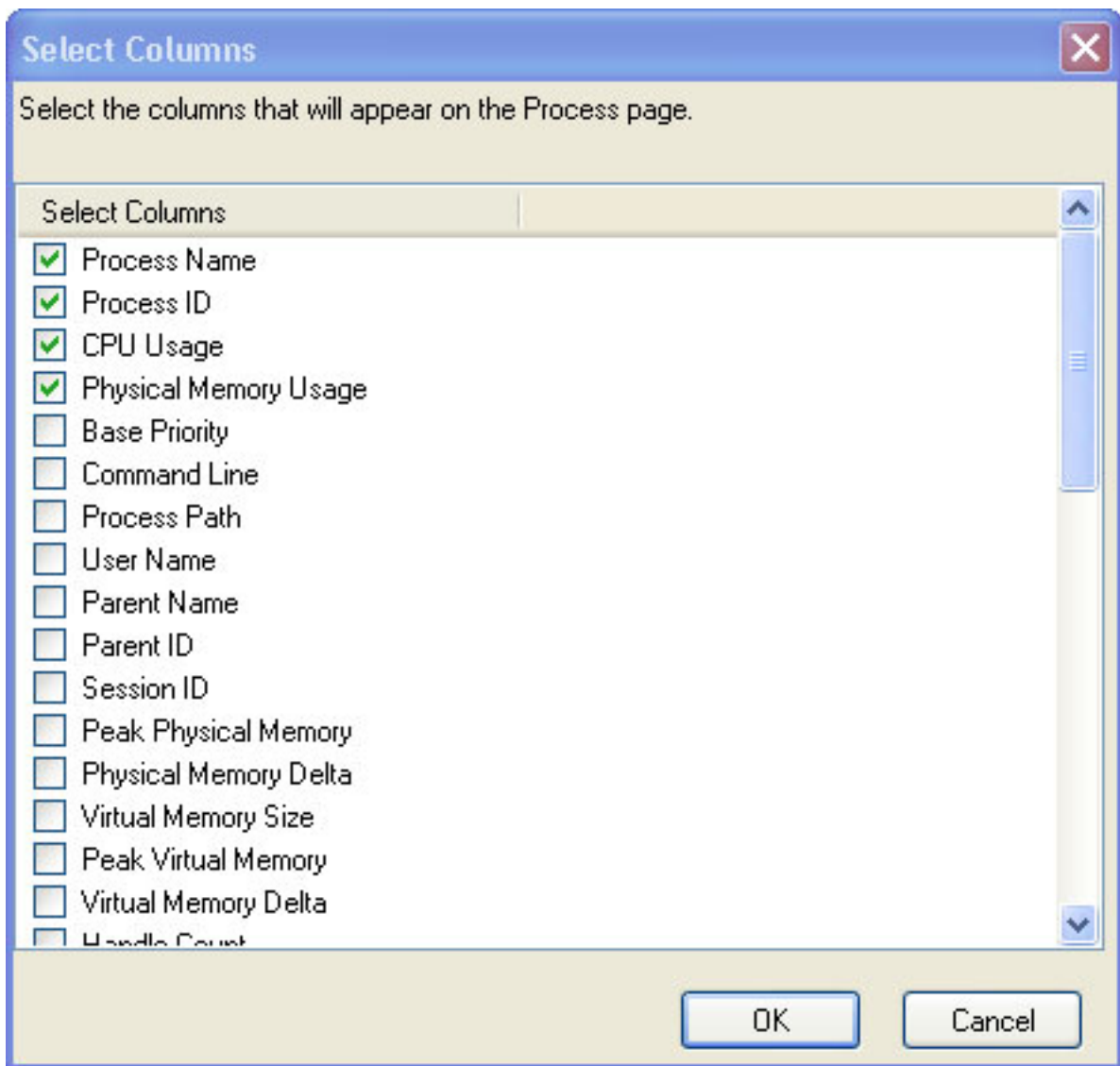
### About Update Speed

This function allows you to choose the frequency at which the data is automatically updated, Click  menu, then click the desired command. To temporarily freeze the data displayed in Power Process Controller, Click "Paused" in the same menu. Data is automatically updated every one second by default.

### How to select columns

The following steps describe how to select columns:

- ▶ **Step1:** Click the "Processes" tab.
- ▶ **Step2:** Click the button , and the following dialog will appear:



Select the columns that you are about to add on the process page of the process manager, click OK to confirm or Cancel to cancel.

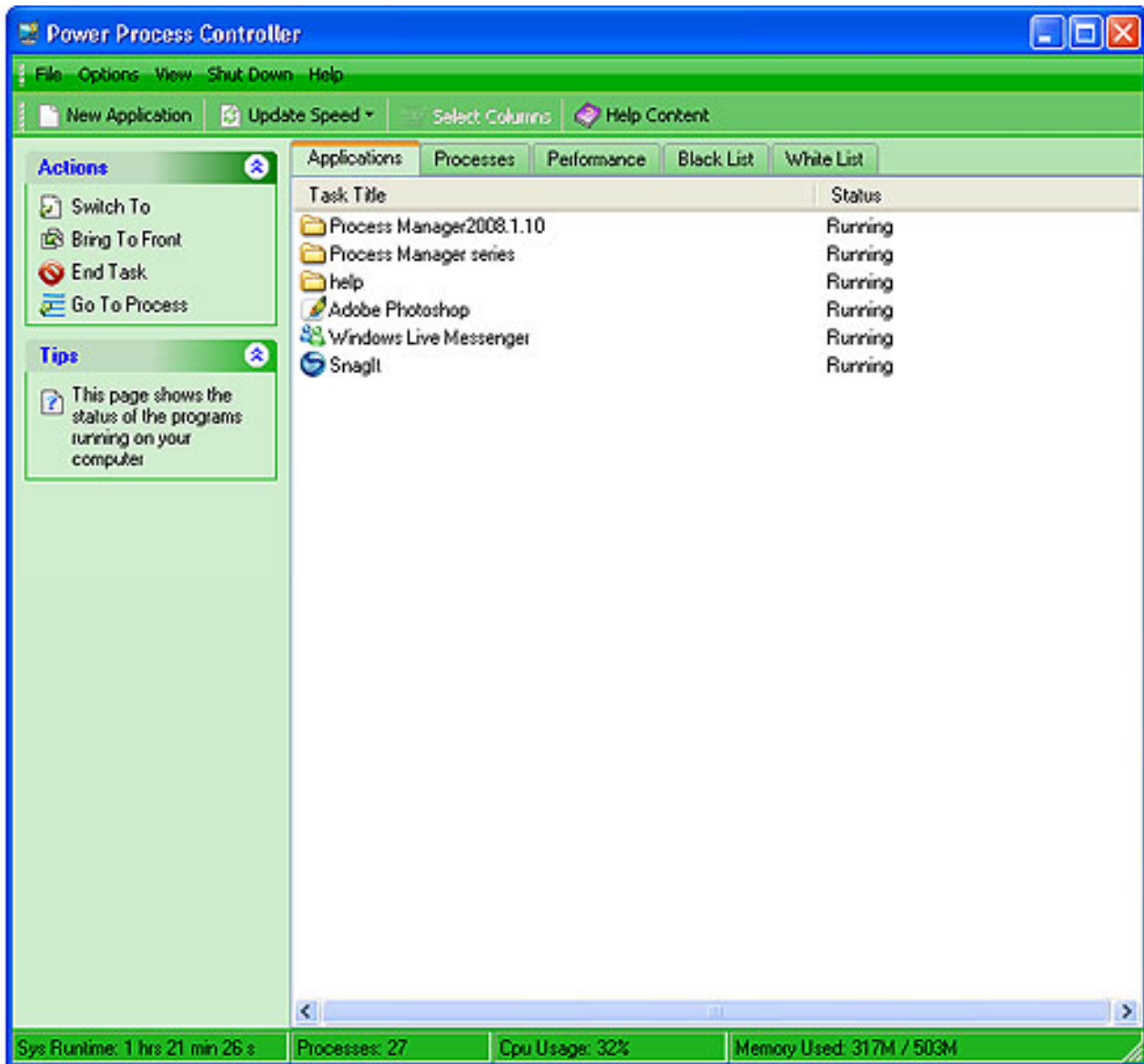
### Other Using Process:

- ▶ [Using Process of Application](#)
- ▶ [Using Processes](#)
- ▶ [Using Process of Performance](#)
- ▶ [Using Process of Black List](#)
- ▶ [Using Process of White List](#)

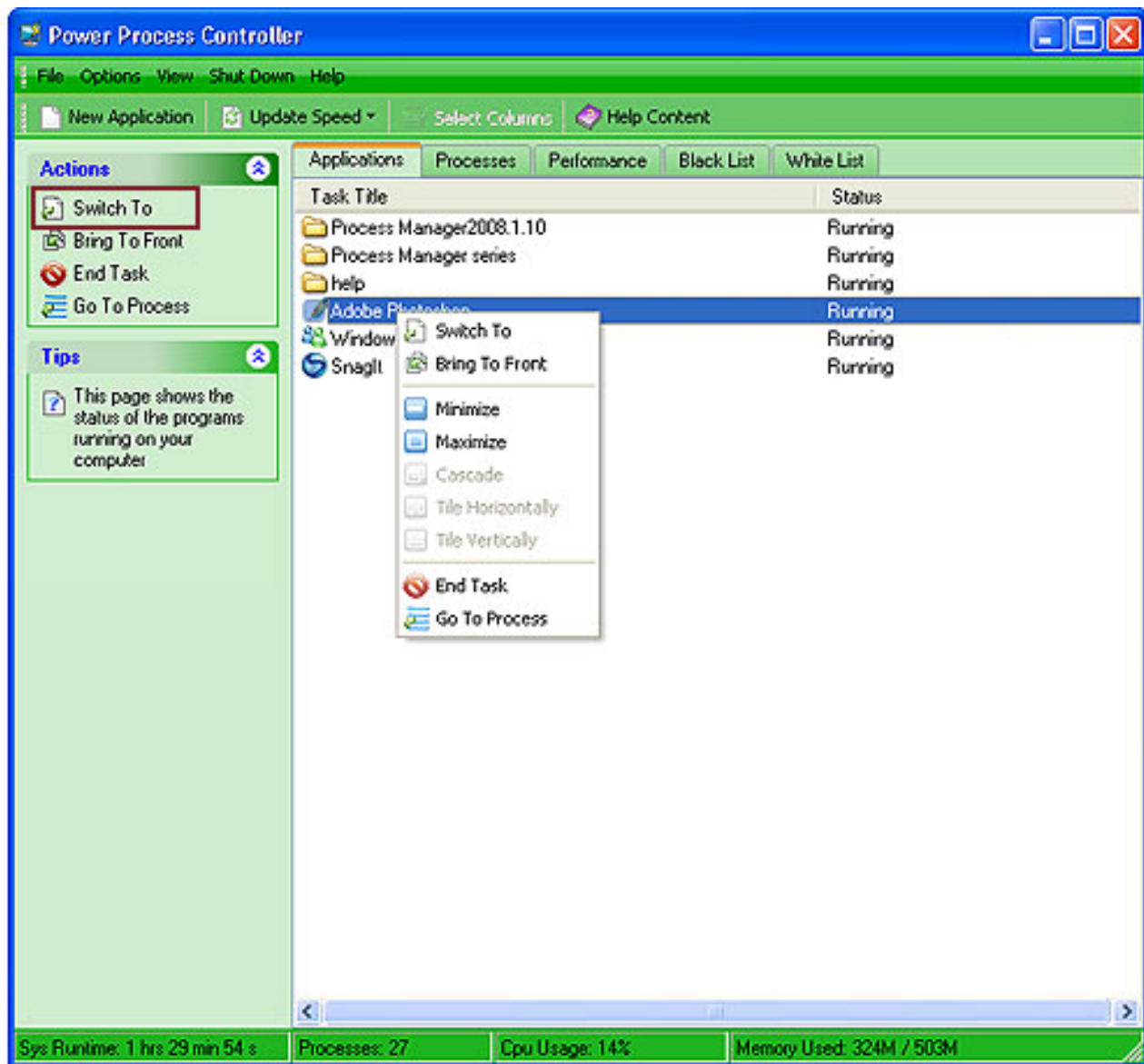
**Buy Now**


### Using Process of Applications

► **Step 1:** Click "Applications" Page, Power Process Controller displays all active programs on the taskbar.



► **Step 2:** To perform a task with a running program, right click the program and select a desired action from the list or select the action form the task panel.



- ▶ To switch to another program, click desired program and click "Switch To".
  - ▶ To bring a program to front, click desired program and click "Bring To Front".
  - ▶ To control the program's window, right click the desired program and select "Minimize" or "Maximize".
  - ▶ To end a program, click the desired program and click "End Task" in the task panel.
-  **WARNING:** Any data entered or changes made without being saved in selected program will be lost.
- ▶ To go to the process interface, click the desired program and click "Go To Process" in the task panel.

## Other Using Process:

▶ [Using Process of Toolbar](#)

▶ [Using Processes](#)

▶ [Using Process of Performance](#)

▶ [Using Process of Black List](#)

▶ [Using Process of White List](#)

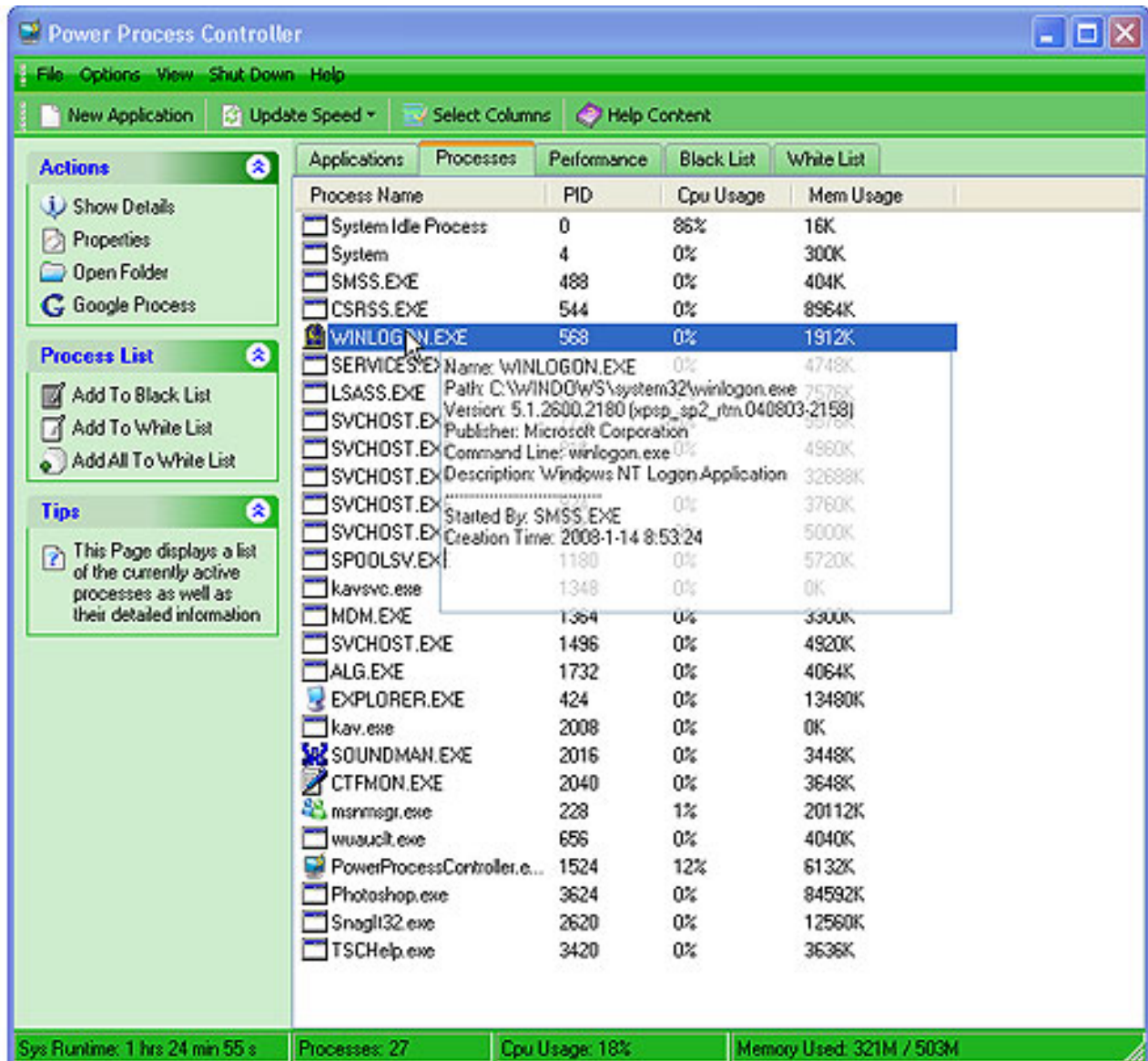


### Using Processes

**Power Process Controller** allows you to view detailed processes information (with descriptions), stop and start new processes, set priorities and much more. You can easily find and remove unnecessary background processes.

You can easily see what's happening behind the desktop which processes are running on your computer.

On the Processes interface, click a listed process to view the General information about the process. Click Show Tips under the View menu to hide the displayed information. The following steps will assist in viewing the detailed information of listed processes.



## ▶ Step 1

To end a process, right click the desired process to end and click "End Process".



WARNING: Terminating a process can cause undesired results including loss of data and system instability. The process will not be given the chance to save its state or data before it is terminated.

To end a process tree, right click the desired process to end and click "End Process Tree"



WARNING: This operation will attempt to terminate this process and any processes which were directly or indirectly started by it. Forcing processes to terminate in this manner can cause data loss and system instability.

## ▶ Step 2

**A.** To debug the selected program by clicking the "Debug".



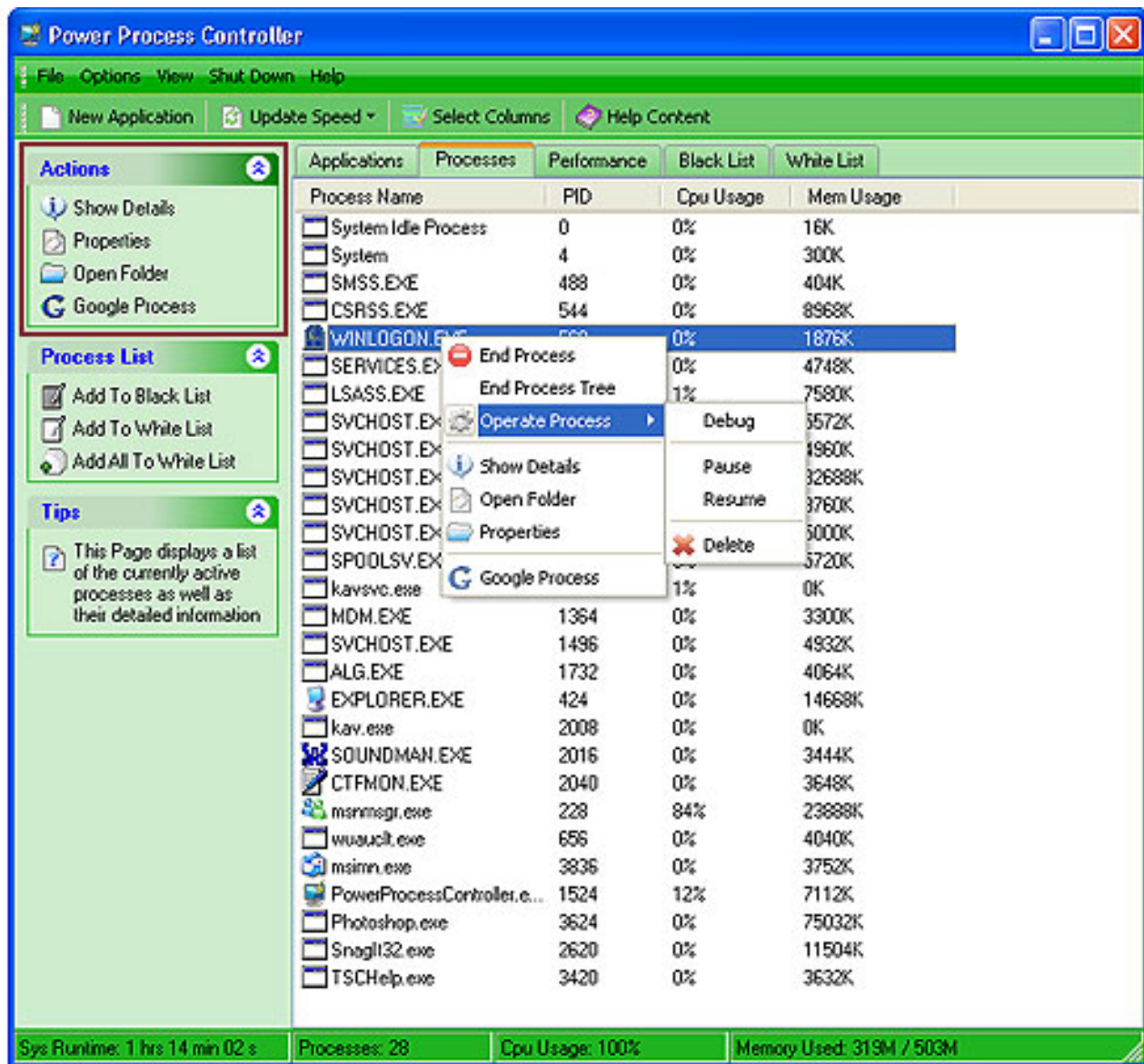
WARNING: This operation may result in loss of data.

**B.** Pause process suspends the execution of process until it is reactivated by the resume process command, click the "Pause" or "Resume".



WARNING: This operation will attempt to pause this process. If you pause some system process, it can cause system instability

**C.** Resume the paused process by clicking "Resume".



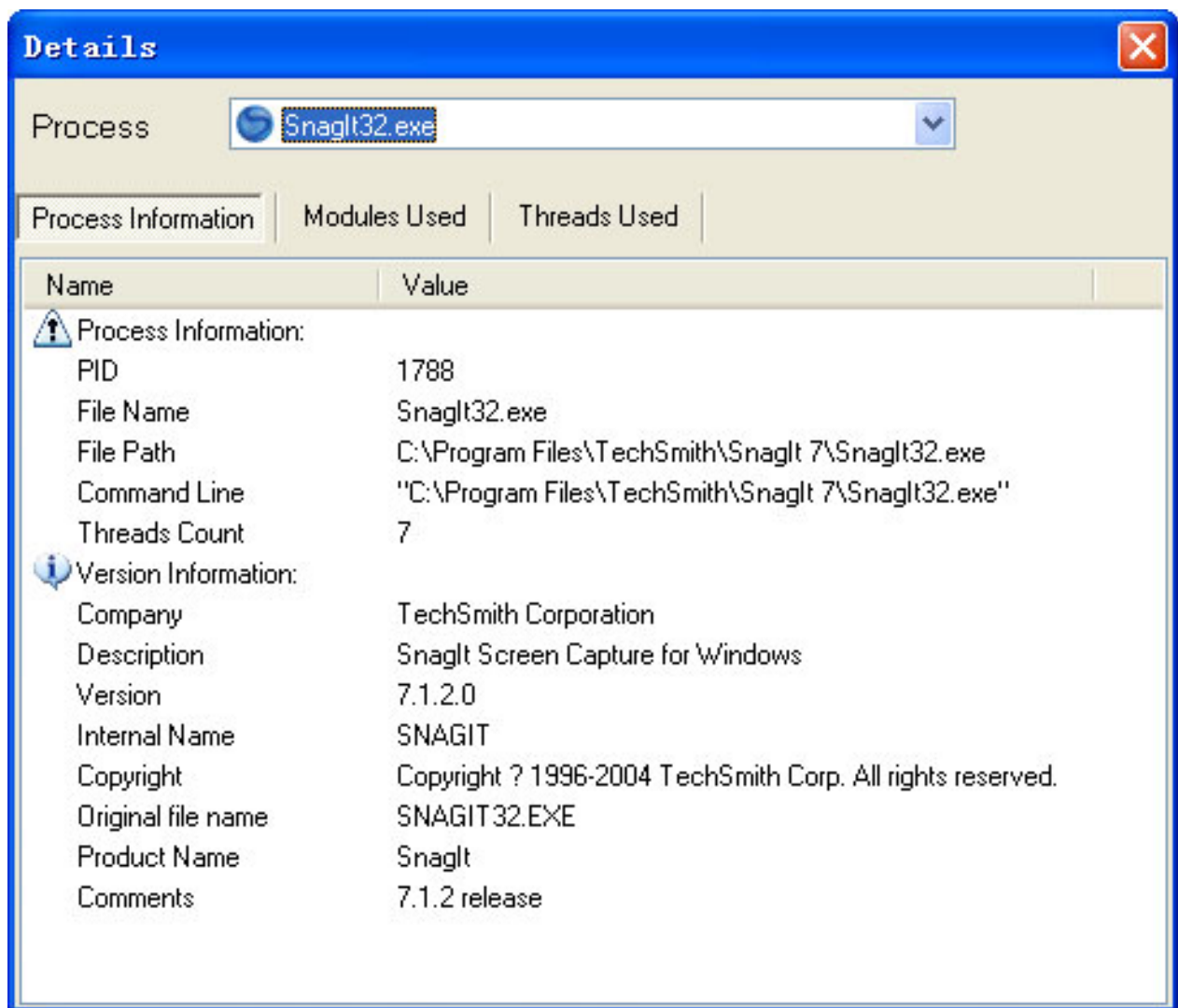
D. Delete the process by clicking the "Delete".



WARNING: Delete a process can cause undesired results including loss of data and system instability. It will delete the execute file of this process.

► **Step 3:**

Click " Show Details" to show information, used modules and used threads about the process. **(Same operation available in the Action area)**

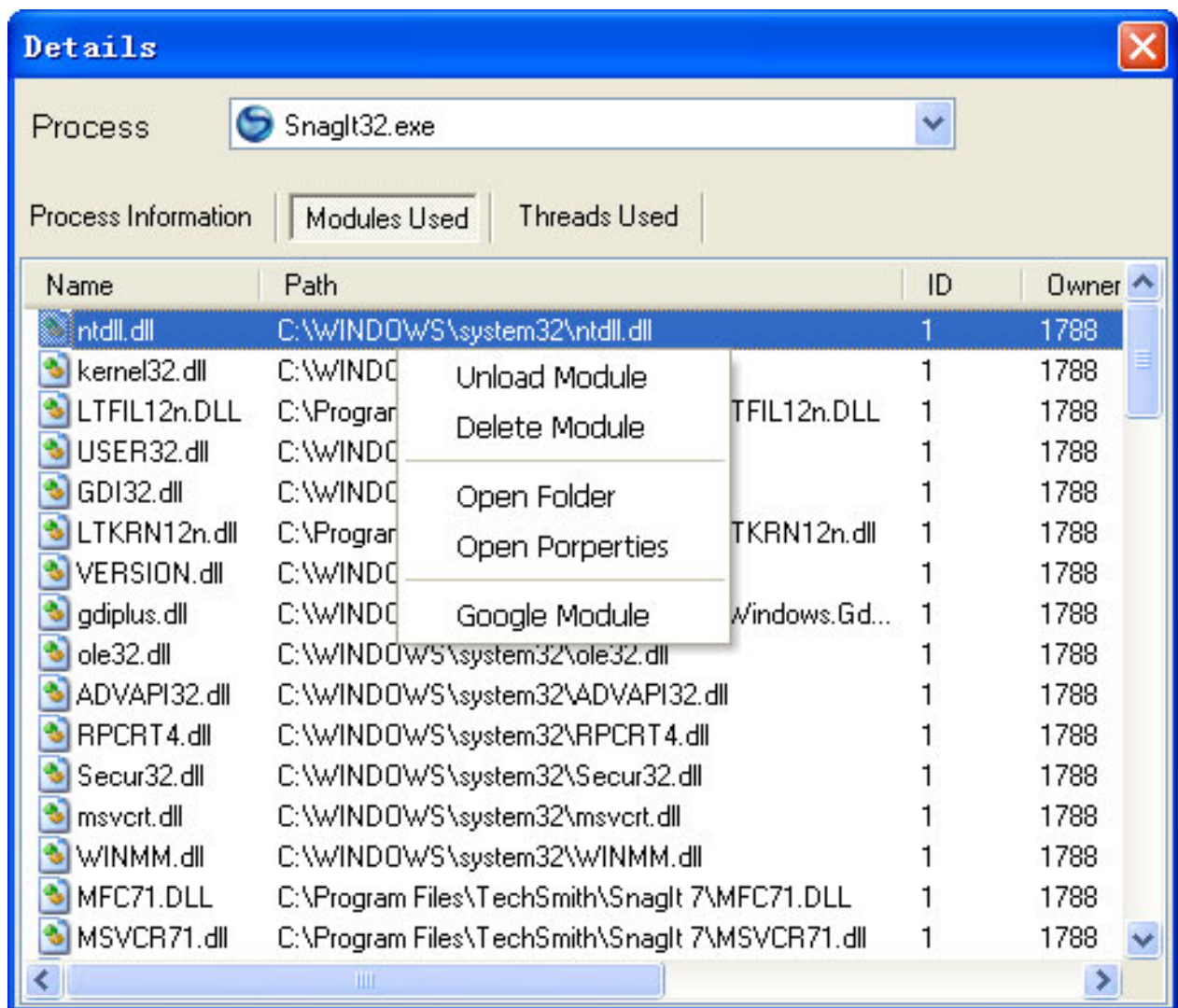


**A:** To unload module of a process.

On the Modules Used tab, click the module that you want to unload, and then right-click to Unload Module

**B:** To delete module of a process

On the Modules Used tab, click the module that you want to delete, and then right-click to Delete Module.



**WARNING:** The two operations may cause the process crash and if you unload or delete module of some system process, it can cause system instability.

**C:** To open properties of a process module

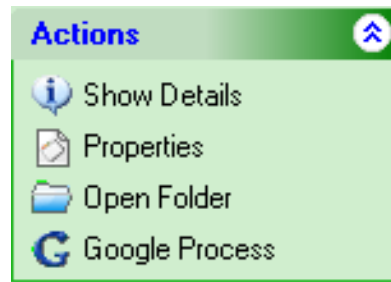
Click "Open Properties", the properties of the selected module will be displayed.

**D:** To open folder for a process module

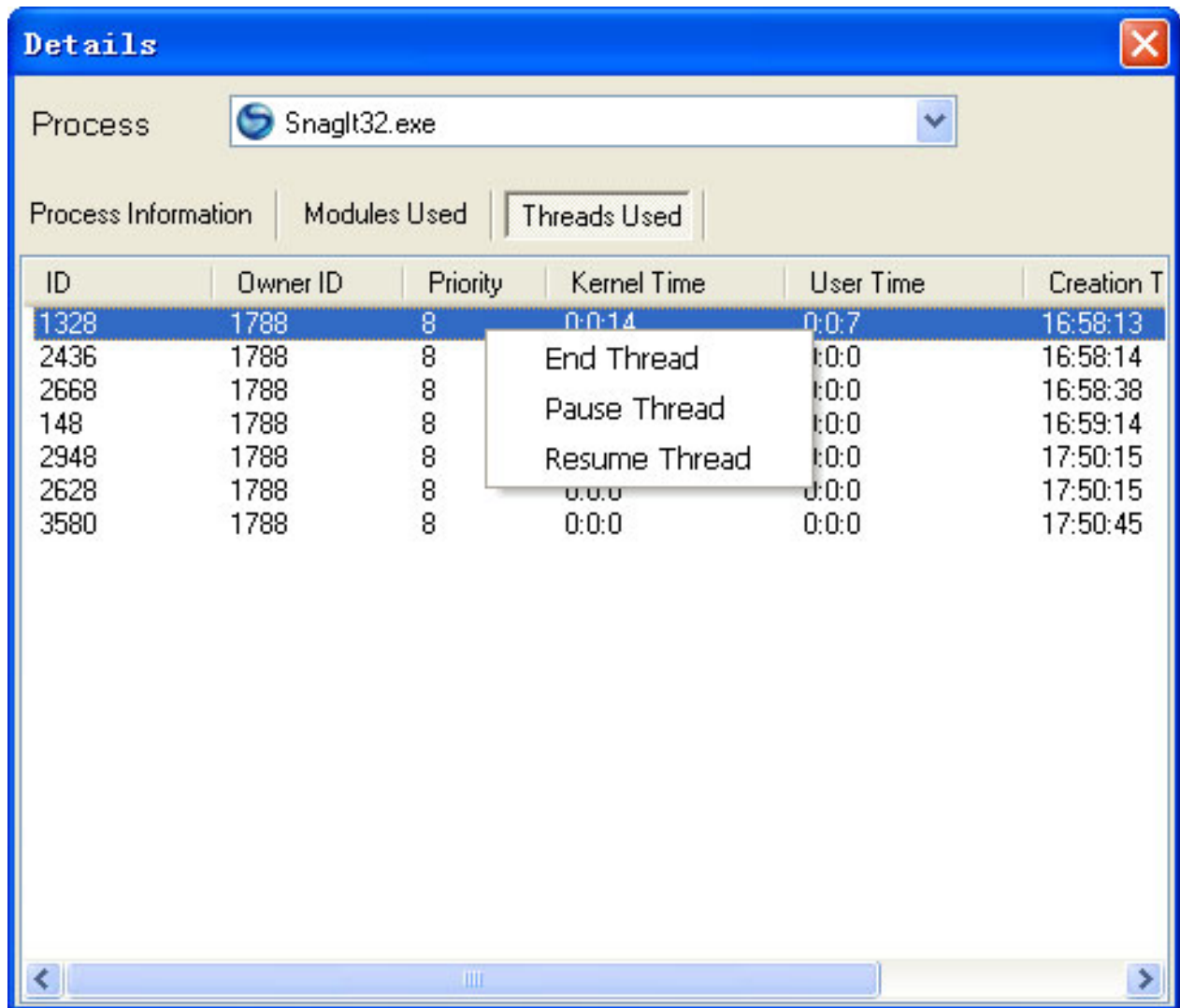
Select a process module and right click "Open Folder" for detailed information.


**E:** Free online resources are available for module information through Google, by clicking "Google Process".

**Note:** You are able to search the online resource, open properties and folder for the selected process in the Action part.



► **Step 4:** You can end or Pause thread suspends the execution of process until it is reactivated by the resume thread command, like this dialog:



 **WARNING:** This operation will attempt to end the thread of this process, it may cause the process break down and instability.

#### Other Using Process:

- [Using Process of Toolbar](#)
- [Using Process of Application](#)

▶ [Using Process of Performance](#)

▶ [Using Process of Black List](#)

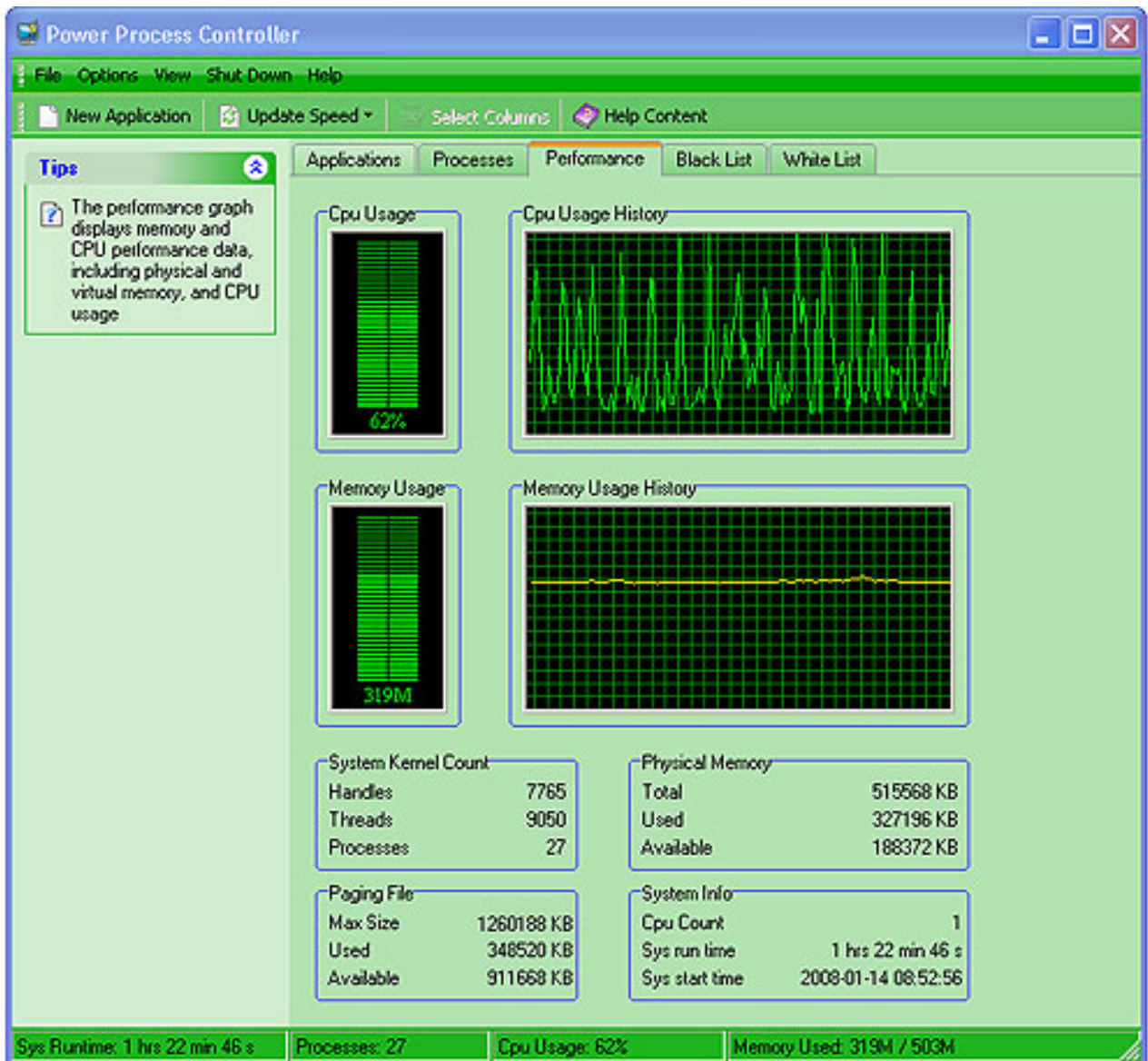
▶ [Using Process of White List](#)



### Using Process of Performance

The Memory and CPU performance data is displayed on this page, including physical and virtual memory, and CPU usage. The data refreshes at the same interval that the main display does. The Performance tab provides detailed information on the current status of your system. You can view the current processor usage in percent, and a graph of the processor usage for the last several seconds. A similar graph also shows memory usage for the last several seconds. You can also view the current usage of the paging file and the physical memory on kilobytes.

► Click "Performance" Tab to view the performance graphs displaying memory and CPU performance data, including physical and virtual memory and CPU usage.



## Other Using Process:

- ▶ [Using Process of Toolbar](#)
- ▶ [Using Process of Application](#)
- ▶ [Using Processes](#)
- ▶ [Using Process of Black List](#)
- ▶ [Using Process of White List](#)




### Using Process of Black List

Power Process Controller offers the feature of "Black List" which is the list of processes that will be terminated in your system. Black List will terminate unwanted or threatening processes immediately when listed here. To terminate processes, add unwanted processes to Black List.

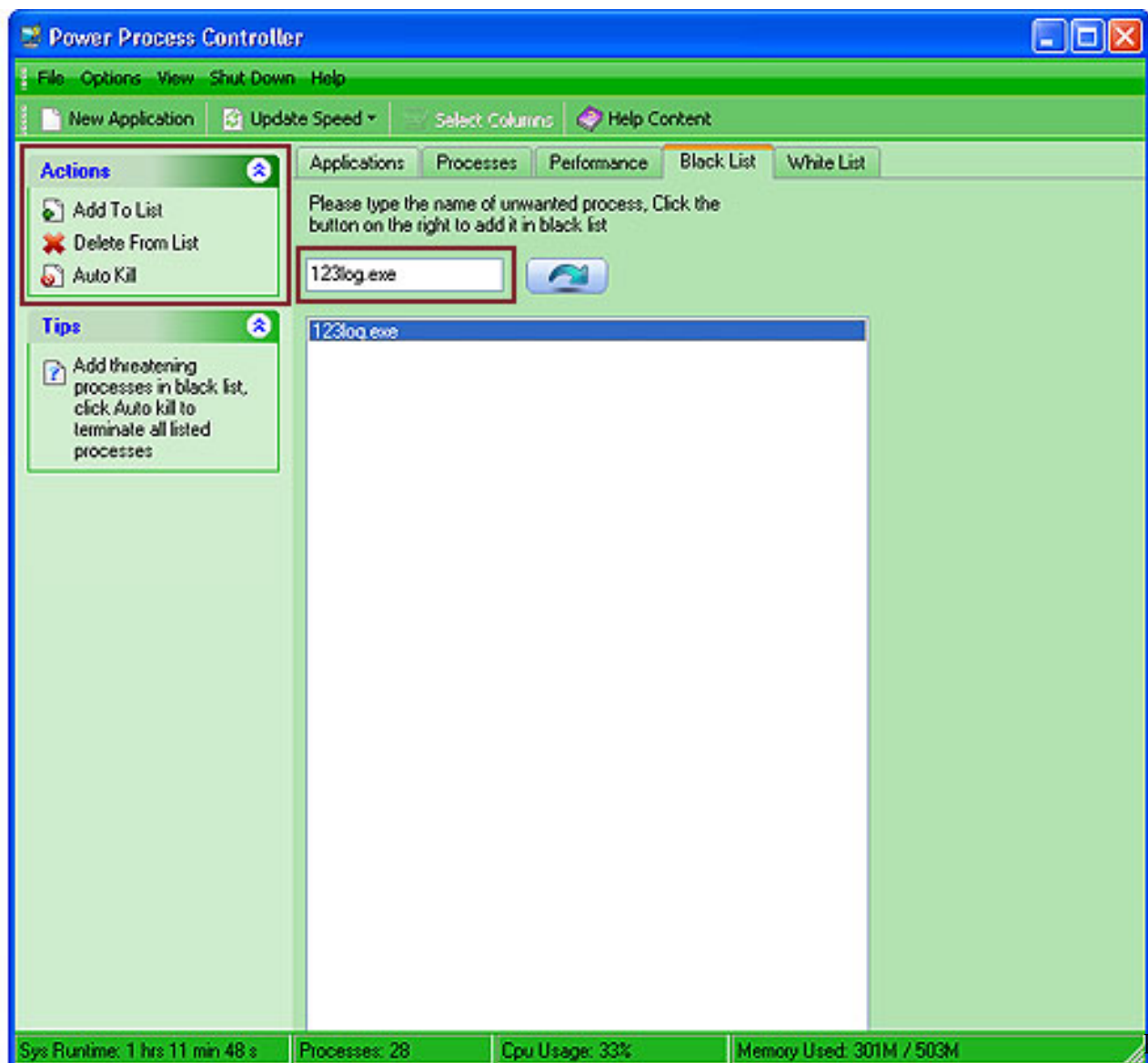
The following steps describe how to kill processes on Black List.

▶ **Step 1:** Click the "Black List" Tab.

▶ **Step 2:** Type the name of the process and click  or "Add To List" in the task panel to add a process to the Black List.

▶ **Step 3:** Click "Delete From List" to delete the selected program from the Black List.

▶ **Step 4:** Click "Auto Kill" to terminate all processes listed in the Black List.





Warning: This operation will attempt to terminate listed processes. The process will not be given the chance to save its status or data before it is terminated.

### Other Using Process:

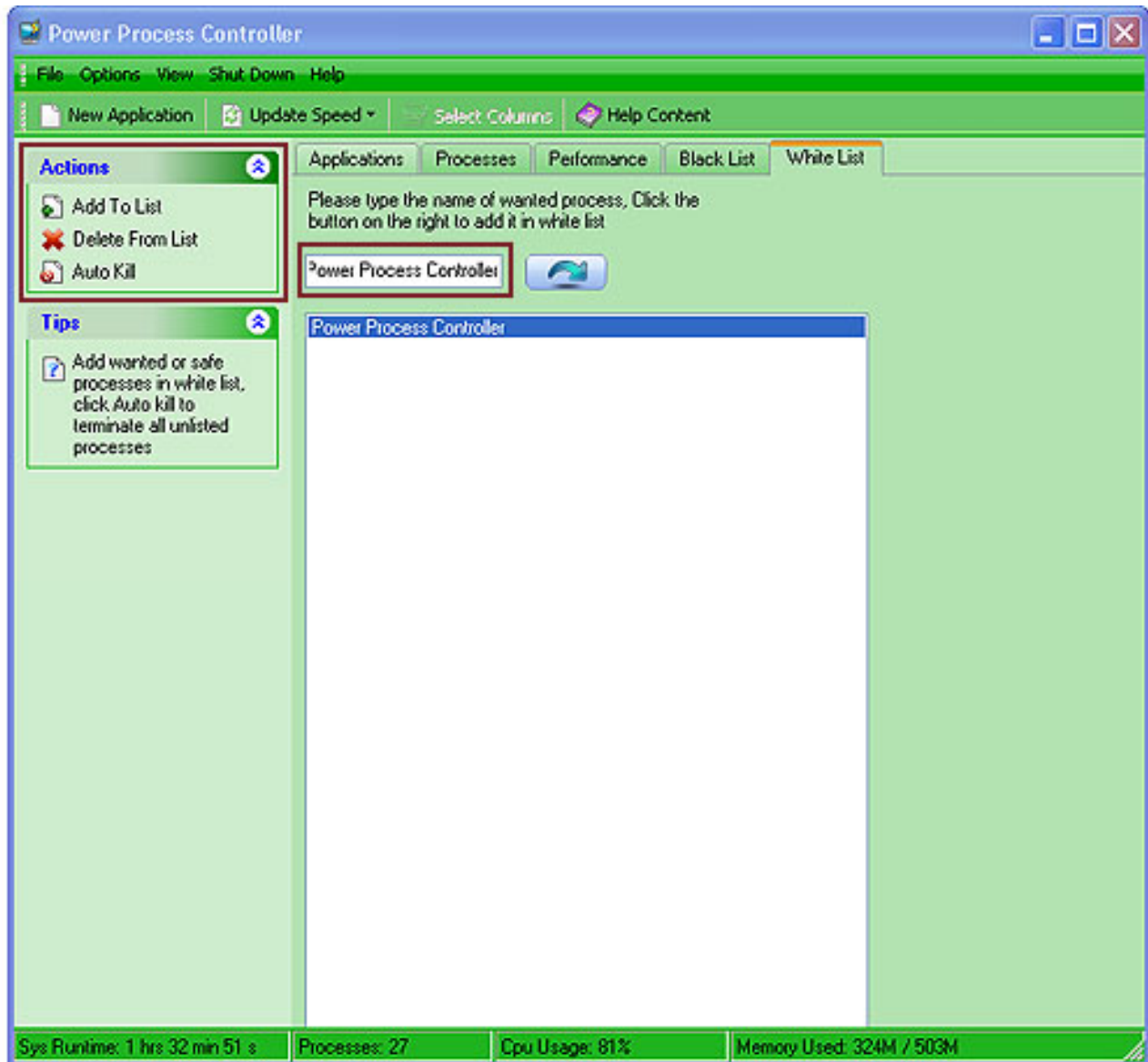
- ▶ [Using Process of Toolbar](#)
- ▶ [Using Process of Application](#)
- ▶ [Using Processes](#)
- ▶ [Using Process of Performance](#)
- ▶ [Using Process of White List](#)


**Buy Now**

### Using Process of White List

White List confirms acceptable processes. It is a list of process names allowed to run on your computer.

Add all allowed or safe processes to White List. Power Process Controller will terminate all unlisted processes when you click "Auto Kill".



- ▶ **step 1:** Type the process name you want to add ,then click  or the "Add To List".
- ▶ **step 2:** To remove a process from the list, click "Delete From List".
- ▶ **step 3:**Click "Auto Kill" to terminate all unlisted processes.



Warning: This operation will attempt to terminate all unlisted processes. The unlisted process will not be given the chance to save its state or data after you click "Auto kill"

### Other Using Process:

▶ [Using Process of Toolbar](#)

▶ [Using Process of Application](#)


▶ [Using Processes](#)

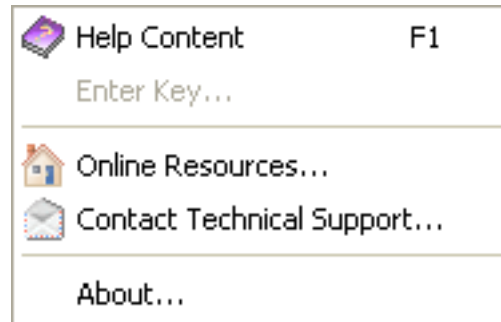
▶ [Using Process of Performance](#)

▶ [Using Process of Black List](#)



### Question Icon

The button  shows other information about Power Process Controller. Click this icon to see the window below:



**Help Content:** Guides you to a detailed help page about Power Process Controller.

**Enter Key:** Enter the registration key to replace the trial version with full version.

**Online Resources:** Guides you to [PCGasStation Website](#) .

**Contact Technical Support:** Contact our Support Team.

**About:** Displays the information of this software.



## About PCGasStation

### Be the Global Leader of Windows!

Being a shareware developer of Windows Operating System solutions, PCGasStation take the lead in this domain. We have professional experience in execute our faith - Think as A Customer. This has given us the idea to create reliable and easy-to-use software.

With sleek, clear interfaces, PCGasStation R&D Center creates simple solutions to complicated problems.

### Contact Us

#### For Customers

Email:

English: [support@pcgasstation.com](mailto:support@pcgasstation.com)

French: [support\\_fr@pcgasstation.com](mailto:support_fr@pcgasstation.com)

German: [support\\_de@pcgasstation.com](mailto:support_de@pcgasstation.com)

#### Power Process Controller

Product ID: 300171546



We always do our best to answer your question!

#### For Partners

North America:

[sales@pcgasstation.com](mailto:sales@pcgasstation.com)

We benefit together with our partners in a win-win model - the PCGasStation Business Model, and we love to talk about creating with you.

PC Gas Station

### FAQs

#### ➤ Replacing Task Manager

If you click File > Replace Task Manager, Power Process Controller integrates itself into your system so that you can access the module by pressing Ctrl+Alt+Del, or by right clicking on an empty part of the taskbar and selecting Task Manager. If you want to use the Task Manager again, simply select the same menu item to remove the check mark in front of it.

Note: This function is only available for Windows 2000 and Windows XP.

#### ➤ Menu bar functions

The menu bar at the top of the Power Process Controller window provides you with additional functions.

Click File > New Application (Run...) to open the Windows Run dialog, which you can use to start a new application or open a file.

Click Option > Select Columns ,On this page you can specify which columns (information) you want to see in the list view of Process Info.

Click View > Always On Top, the process you choose always display on the most preceding.

Click Shut Down > Turn off, you can close your computer or restart it.

Click Help > Help content , show more help information in using of Power Process Controller.

#### ➤ To end a process

Click the process that you want to end, and then click End Process.



Be careful when ending a process. If you end an application, you will lose unsaved data. If you end a system service, some part of the system might not function properly.

#### ➤ Process Properties

The "Process Properties" dialog displays additional information about a process.

The following info is shown:

**A:** Complete version resource

**B:** Path of the process executable

**C:** Current working directory

**D:** Environment variables

**E:** Resource types

**F:** Common file information

### How to buy Power Process Controller

As soon as you make your order, our resellers will verify it. Your order will most likely be processed within less than 1 hour, but in some VERY rare cases it may take resellers more than 24 hours to process your payment.

The registration key will be automatically generated at our server and e-mailed to you immediately after we receive payment confirmation from our e-commerce reseller.

Please do not worry if you haven't received the registration information right away. Delays usually occur due to the high security settings of spam filters used by our clients. Our message may be rejected as a spam message by the mail service you use.

If you haven't got the registration message within several hours, feel free to contact our [Support Team](#) via email.

If you have questions concerning our software, send e-mail to: [support@pcgasstation.com](mailto:support@pcgasstation.com). **We always do our best to help you!**



**Buy Now**

### Why Power Process Controller?

#### Save Time

- It is outstanding in **speed**.
- The **easy-to-use interface** helps you to catch on to the system quickly.

#### Save Money

- It is your **one-way ticket** to monitoring all your processes.
- 30-day money-back** guarantee if you are not satisfied with it!

#### All in one tool

Do more with dealing with threatening programs, show more details about the process and kill programs manually are all supported by this powerful tool.

#### Easy-to-use

With step-by-step manual, Whether you are an experienced user or a beginner, the software will make the task of monitor your system a breeze!

## **What you will have after purchasing this product:**

### **Full version of Power Process Controller**

Fun in unlimited system optimizing.

### **Free update** (Major Update Not Included)

### **Customer care**

We are pleased to offer our care to meet your needs. We promise that any customer questions will be replied within 1 business day!

### **Coupons for PCGasStation products in Discount Center**

We prepared a series of benefits to our customers.

## **Is my order secure?**

We promise the most secure purchase as we did for years.

All these PCGasStation partners-[ShareIt](#) and [RegNow](#) have passed strict certification. We truly believe in 'Only by benefiting our customer can we benefit ourselves'. So your purchase security in PCGasStation is our top priority! PCGasStation has been involved in E-commerce for years. And through these years, we built up a secure online shopping system. You can enjoy the speed and convenience we offer.